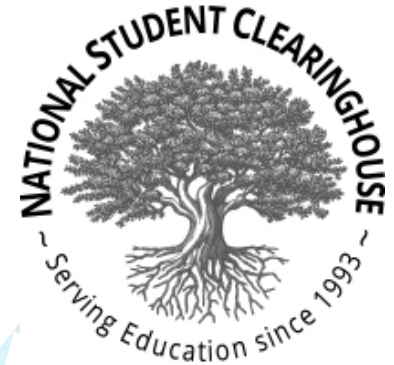




SHEEO

STATE HIGHER EDUCATION EXECUTIVE OFFICERS ASSOCIATION



Answering the Call for Better Student Data

John Armstrong, *Senior Policy Analyst, SHEEO* ([@miniarmstrong](https://twitter.com/miniarmstrong))

Michelle Blackwell, *Manager of Data Partnerships, NSC*

Eric Godin, *Associate Vice President, SHEEO* ([@eegodin](https://twitter.com/eegodin))

2019 SHEEO Higher Education Policy Conference

Boston, MA



[#SHEEOConf](https://twitter.com/SHEEOConf)

SHEEO's Role for the Postsecondary Data Partnership (PDP)

- Ensure state interests and needs are met
- Conduct data analysis for CCA
- Convene
- Work with third party organizations

MAJOR DATA INITIATIVES & MEASURES CROSSWALK

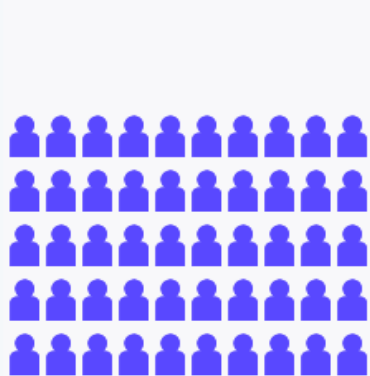
	Measures	A2S	ATD	Aspen	CDS	CBD	CCA	CM	CS	CSRDE	DCP	MLDE	NCCBP	NGA	PAR	SAM	VFA	VIM	VSA	Total
ACCESS	Enrollment																			18
PROGRESSION	Credit Accumulation																			8
	Other Course Completion																			8
	Gateway Course Completion																			7
	Program Of Study Selection																			1
	Retention And/Or Persistence																			15
COMPLETION	Graduation																			16
	Transfer-Out																			15
	Credentials Conferred																			17
COST	Student Prices																			5
	Debt																			6
POST-COLLEGE OUTCOMES	Employment																			8
	Earnings																			7
	Repayment																			3
	Learning Outcomes																			4
	Continuing Education																			6
EFFICIENCY	Costs Related To Credit-Taking Or Completion																			3
	Time To Credential																			7
	Credits To Credential																			6
	Expenditures Per Student																			2
	Change In Revenue From Change In Retention																			2
	Completions Per Student																			6
	Student Share Of Cost																			1
	Expenditures Per Completion																			5
EQUITY <small>These are the disaggregates available for each initiative. Not all of the measures are disaggregated by all characteristics listed here.</small>	Enrollment Status																			16
	Attendance Intensity																			16
	Degree/Certificate Seeking Status																			12
	Economic Status																			12
	Race/Ethnicity																			15
	Gender																			13
	Age																			12
	Program Of Study																			9
	First-Generation Status																			3
	Level Of Academic Preparation																			12
Total Measures By Initiative		10	21	16	14	23	20	20	21	15	6	20	17	8	19	8	19	22	17	

Value Proposition for States

- Fulfill reporting requirements for multiple initiatives
- Detailed analysis of sub-populations
- More accurate understanding of today's student patterns between institutions
- Access to interactive dashboards

Third Party Example – Complete College America

REMEDIAL ENROLLMENT & GATEWAY SUCCESS



HISPANIC

FOR EVERY 100 STUDENTS STARTING COLLEGE, 50 ARE ENROLLED IN MATH REMEDIATION.



BLACK

FOR EVERY 100 STUDENTS STARTING COLLEGE, 61 ARE ENROLLED IN MATH REMEDIATION.



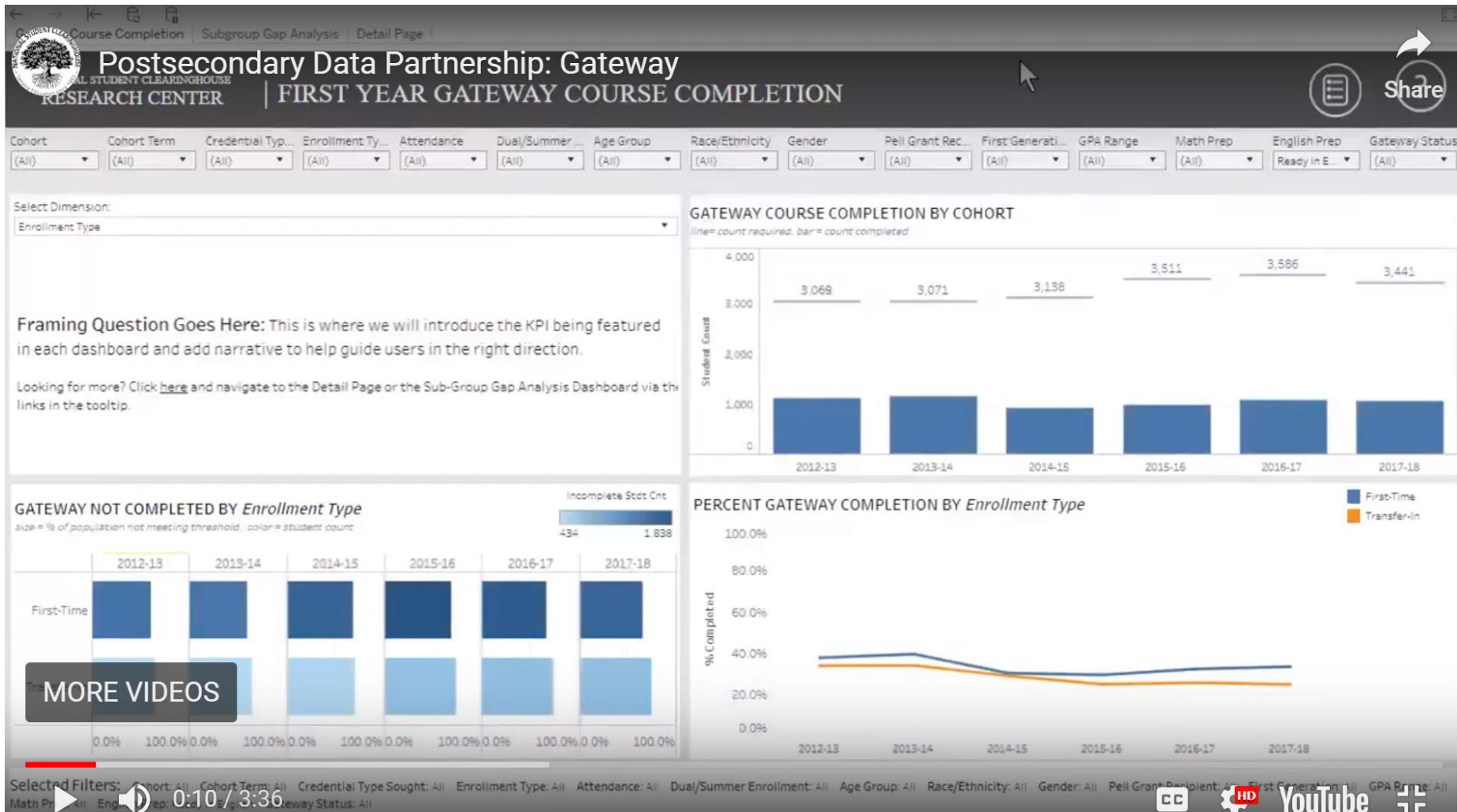
WHITE

FOR EVERY 100 STUDENTS STARTING COLLEGE, 44 ARE ENROLLED IN MATH REMEDIATION.



ASIAN

FOR EVERY 100 STUDENTS STARTING COLLEGE, 33 ARE ENROLLED IN MATH REMEDIATION.

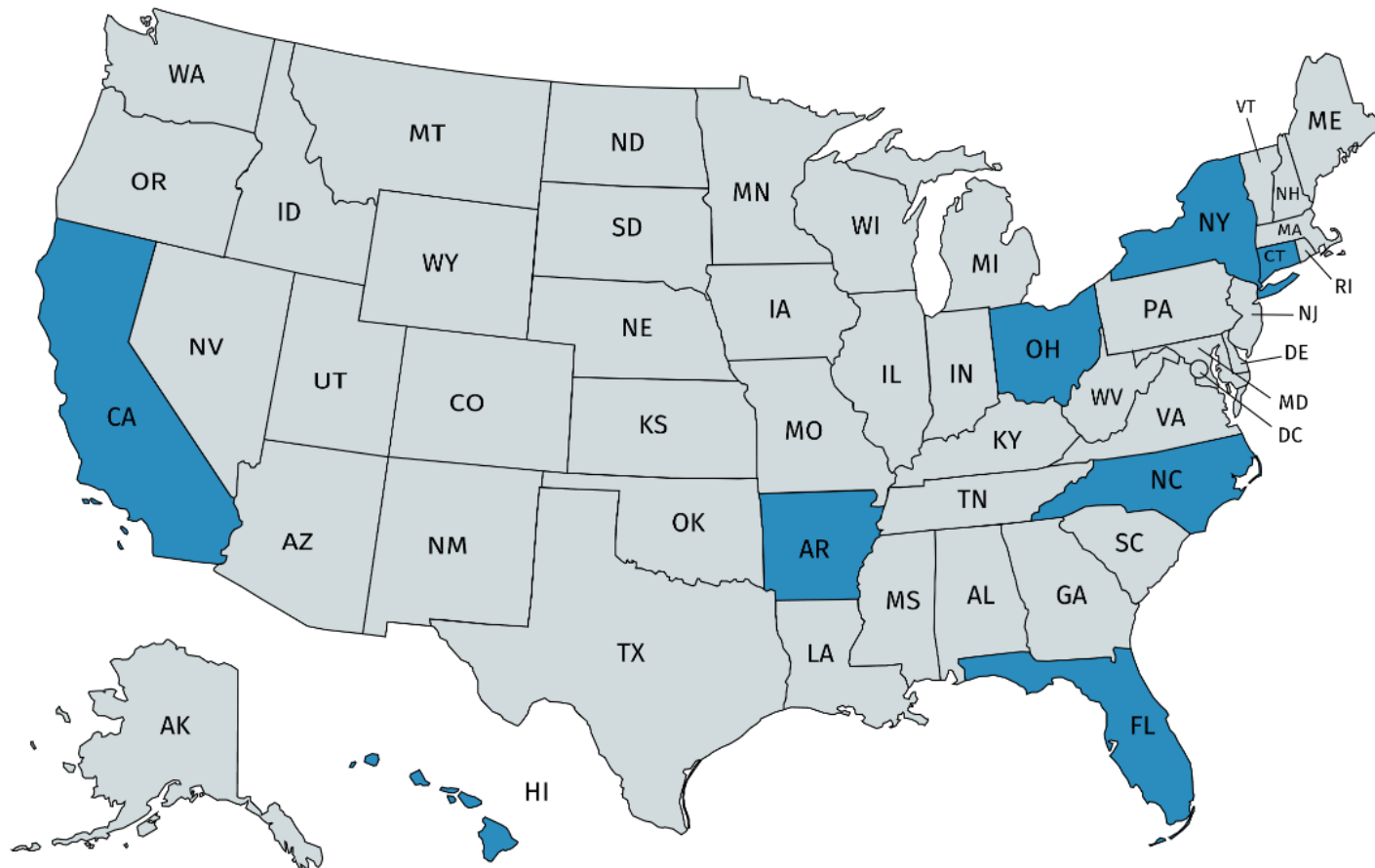


Third Party Example – Jobs for the Future

To increase JFF network capacity for using data to improve student success.

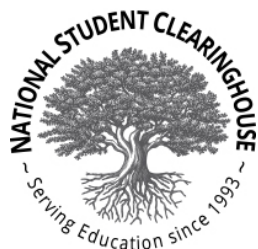


8 State Teams at SHEEO PDP Convening



Arkansas, California, Connecticut, Florida, Hawaii, New York, North Carolina, & Ohio

Presenters



BILL & MELINDA
GATES *foundation*



insidetrack[®]



**COMPLETE
COLLEGE
AMERICA**



**UNIVERSITY SYSTEM
OF GEORGIA**

**CU
NY** THE CITY
UNIVERSITY
OF
NEW YORK

DCCC
THE COLLEGE OF
DAVIDSON AND DAVIE COUNTIES

 *Lorain County
Community College*

 **CENTRAL PIEDMONT**
COMMUNITY COLLEGE

Comments from Convening Participants

Benefits to PDP Participation

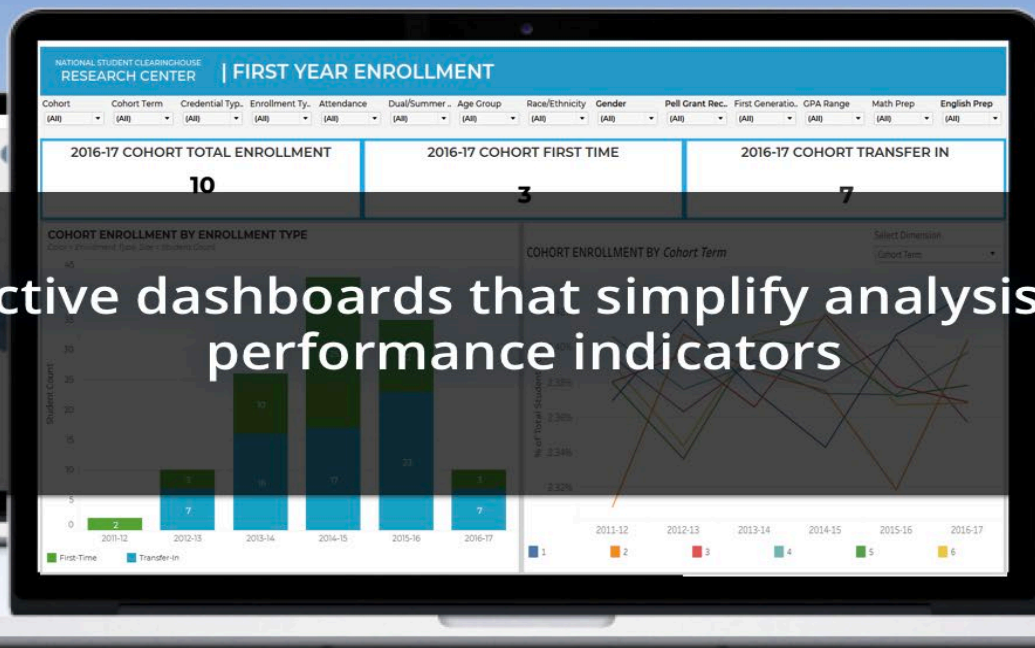
- Data Standardization
- Decreased Reporting Burden
- Statewide Data
- Tableau Dashboards
- Early Momentum Key Performance Indicator (KPI) Data
- Analysis Ready File
- Subpopulation Analysis
- Benchmarking (Coming Soon)

SHEEO's PDP Technical Assistance

- Ad-hoc Assistance from SHEEO
- SHEEO Research Papers:
 - 4th Quarter of 2019
 - 4th Quarter of 2020
- Second PDP Convening – Early 2020
- Online Toolkit:
 - Blog Posts
 - Case Studies
 - Data Analysis Examples
 - Technical Briefs (e.g., Defining Gateway Courses)

Better Data for Better Student Outcomes

Interactive dashboards that simplify analysis of key performance indicators



A National Effort by NSC & Our Partners.

Dedicated Too:

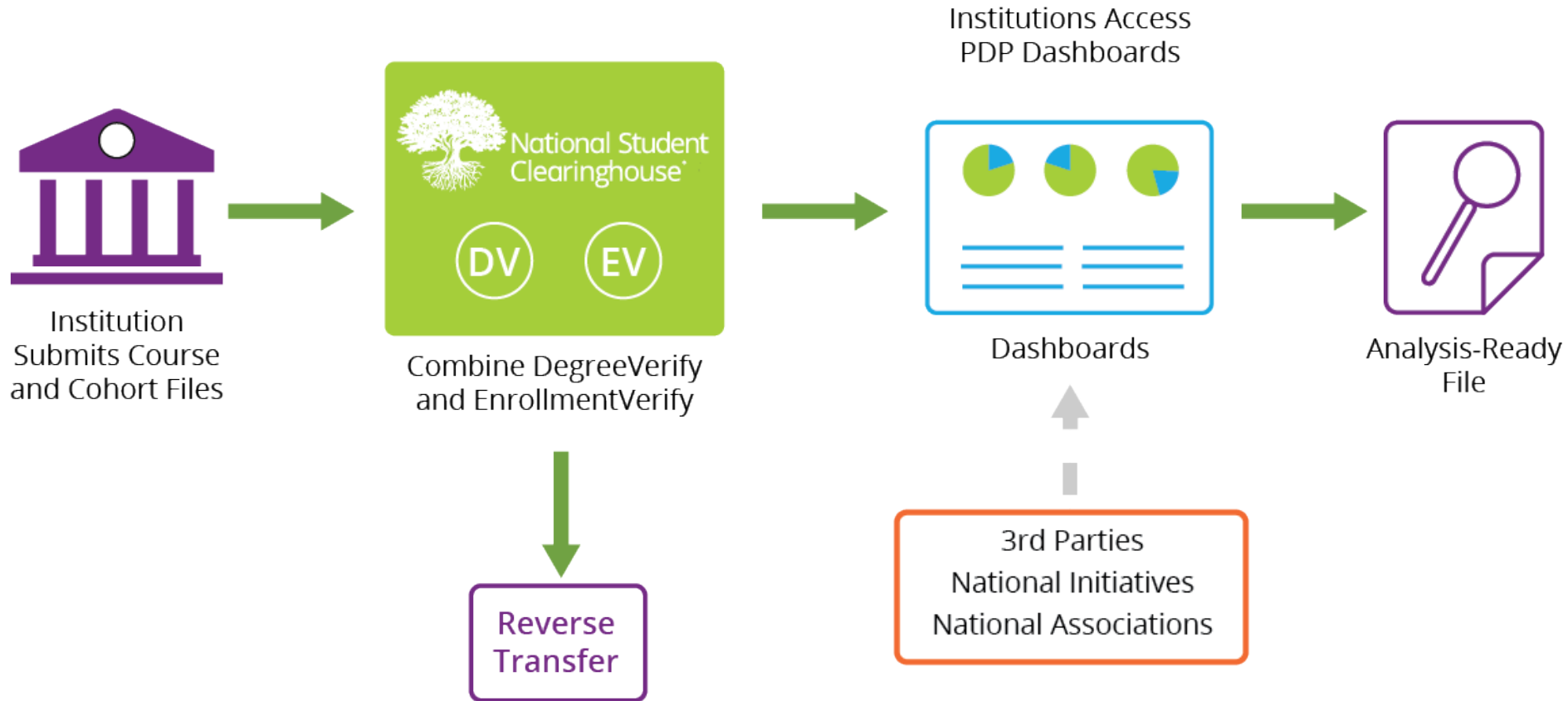
- Simplify, streamline data gathering
- Provide comprehensive, intuitive reporting
- Enable more data-informed decisions across the campus
- Data submission to one source
- Reporting to multiple sources
- Aid institutions with the ability to retain students and increase students earning credentials

Who are our Partners

Supported by the
Bill & Melinda Gates Foundation & The Lumina Foundation



PDP Process – Building on Our Existing Institutional Relationships and Reporting



Contents of Two Additional Files + Optional Financial Aid

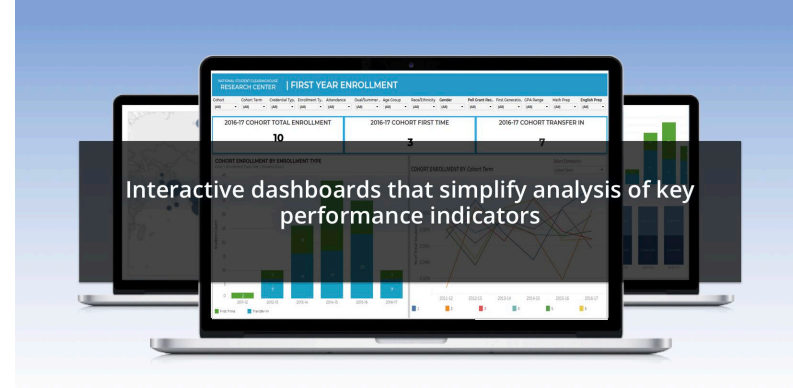
Cohort File

- Entry status
- High school completion & GPA
- First-generation status
- Race/ethnicity
- Dual enrollment
- Number credits attempted & transferred
- Math & English readiness

Course File

- Pell status
- Program Intent (degree type, transfer)
- GPA (term, cumulative)
- Course name, number, CIP, type, delivery method
- Course credits, grade, etc.
- Gateway Math & English
- Degree type sought
- Reverse Transfer information

Postsecondary Data Partnership Dashboards



Filter:

- Cohort
- Cohort Term
- Credential Type Sought
- Age
- Race/Ethnicity
- Gender
- Enrollment Type
- Attendance
- Dual/summer Enrollment
- Pell
- First Generation
- GPA
- Math Prepared
- English Prepared



EXECUTIVE SUMMARY

Select an Institution Type

Four Year

Select an Institution

Hometown University

Academic Year	Cohort Term	Credential Type Sought	Enrollment Type	Attendance	Dual/Summer Enrollment	Age Group	Race/Ethnicity	Gender	Pell Grant Recipient	First Generation	GPA Range	Math Prep	English Prep
2016-2017	(All)	(All)	(All)	(All)	(All)	(All)	(All)	(All)	(All)	(All)	(All)	(All)	(All)

Total Number of Bachelor's / Average Time to Credential

348

5.9 yrs

Total Number of Associate / Average Time to Credential

18

2.6 yrs

Total Number of Certificates / Average Time to Credential

90

3.2 yrs

Enrollment by Cohort

First-Time Transfer-In

Most Recent Cohort:
Enrollment

560

Most Recent Cohort:
Credit Accumulation Rate - 15/30:

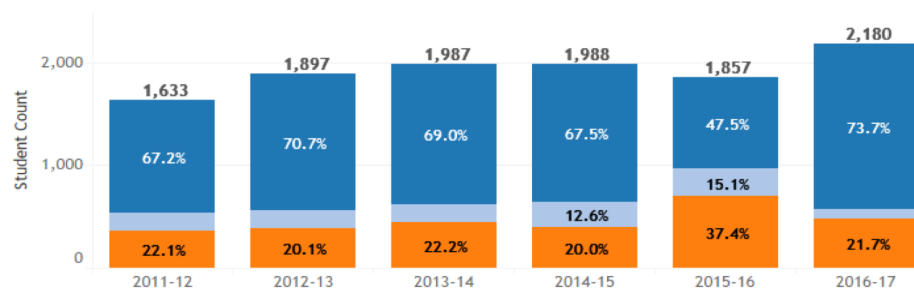
0.0%

Retention/ Persistence by Cohort

Select Chart

Retention/ Persistence

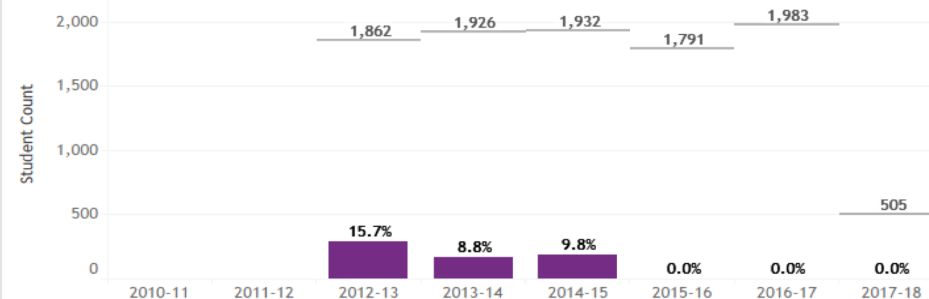
Not Enrolled
Persisted
Retained



Credit Accumulation Rate - 15/30

Select Chart

Credit Accumulation Rate - 15/30



Selected Filters: Academic Year: 2017-2017 Cohort Term: All Credential Type Sought: All Enrollment Type: All Attendance: All Dual/Summer Enrollment: All Age Group: All Race/Ethnicity: All Gender: All Pell Grant Recipient: All First Generation: All GPA Range: All Math Prep: All English Prep: All

©2019 National Student Clearinghouse. All Rights Reserved.

← Undo → Redo ↶ Revert ↻ Refresh ⏸ Pause

Download Full Screen

Benefits

- **Access to interactive business analytics tools built in Tableau**
- **Eight key performance indicator dashboards**
- **Transfer out dashboard**
- **Leadership-facing Executive Summary dashboard**
- **Sub-group Gap Analysis**

Benefits

- **System level roll up**
- **Disaggregated data that can be filtered by many different parameters**
- **Reduced reporting burden for sites participating in multiple initiatives**
- **Student-level analysis-ready file that includes...**

Resources

Home » Colleges & Universities » Postsecondary Data Partnership

Postsecondary Data Partnership

[How the PDP Works](#) / [Key Performance Indicators](#) / [KPI Dashboards](#) / [FAQs](#) / [Dashboard Video Tours](#)



The **Postsecondary Data Partnership (PDP)** is a nationwide effort to help colleges and universities gain a fuller picture of student progress and outcomes, meet various reporting requirements, and identify where to focus their resources. The partnership is dedicated to the idea that easier access to better data helps you, the higher education professional, develop actionable insights and make informed decisions to support student success.

One of the biggest barriers to improved data gathering and utilization by colleges and universities is the cumbersome process of collecting key data and metrics, then reporting them for multiple voluntary and mandatory data collections. The PDP empowers the nation's colleges and universities with better data and



[PDP Login](#)

RESOURCES:

- [Fact Sheet](#)
- [Data Submission Checklist](#)
- [Data Submission Guide](#)
- [Data Submission FAQs](#)
- [Analysis-Ready File Data Dictionary for Institutions](#)
- [PDP KPIs by Critical Elements](#)
- [Login to Submit Data](#)
- [Check Status of Your Files](#)
- [Clearinghouse Academy](#)

PDP SUPPORT:

- For login issues, contact PDP customer support at PDPService@studentclearinghouse.org

Questions

To participate or further questions:

pdpSERVICE@studentclearinghouse.org

<https://studentclearinghouse.org/colleges/pdp/>