



**Better Together:
How SHEEOs and Statewide Nonprofits Can
Partner to Increase Attainment**

**SHEEO Policy Conference
August 6, 2024**

Goals for This Session

- Define the roles of state higher education agencies and college attainment organizations
- Share examples of how SHEEOs and CANs can work together to advance attainment
- Describe the elements of successful collaboration based on experience in Missouri, Alabama, Texas, and Tennessee

Panelists

- **Dr. Kenyatta Lovett**, Principal, Education Strategy Group
- **Samantha Dickey**, Assistant Commissioner for Postsecondary Policy, Missouri Department of Higher Education & Workforce Development
- **Dr. Robin McGill**, Deputy Director for Academic Affairs, Alabama Commission on Higher Education (ACHE)
- **Manisha Mishra**, Deputy Director, Alabama Possible
- **Laura Winter**, Executive Director, Missouri College & Career Attainment Network

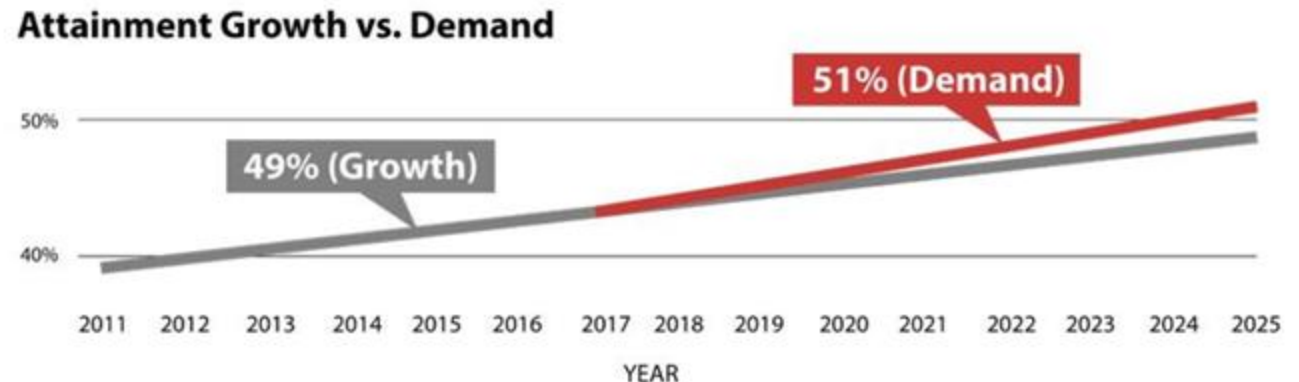


SETTING THE CONTEXT: Alabama

Alabama's Success Plus Goal: 500,000 New Postsecondary Credentials by 2025



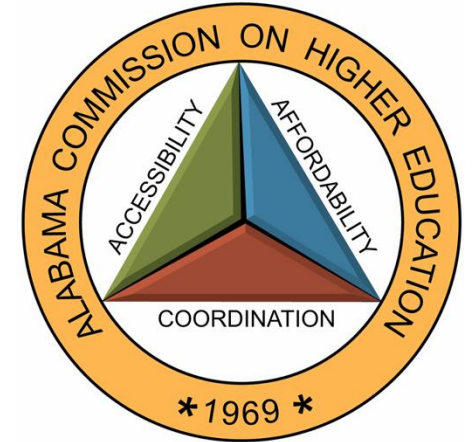
Designed to align Alabama's high schools, community colleges, and adult education programs to career pathways in high-demand fields.



A July 2022 report revealed that Alabama is halfway to its goal, with 214,922 credentials earned in the first four years of the plan, showcasing a workforce gearing up for success.

About ACHE

The Alabama Commission on Higher Education (ACHE) is the statewide coordinating board for public higher education.



Alabama has 38 public postsecondary institutions:

- 14 universities, with 11 separate governing boards
- 24 community colleges, governed by one system office (ACCS)

Core responsibilities include

- Academic Program Review
- Consolidated Budget Recommendation
- Data Portal
- State Student Financial Aid
- Fiscal Agent for Postsecondary Initiatives
- Statewide Strategic Planning

Beyond the core, role includes

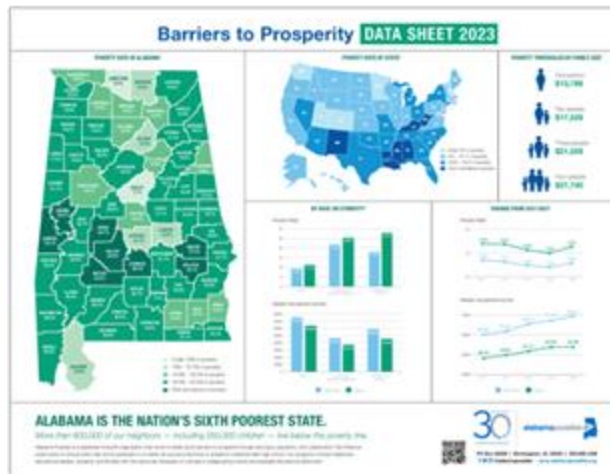
- Professional Development for IHEs
- Incentives for Innovation
- Workforce Development Partnerships
- Designing and Implementing Statewide Student Success Programs
- Conducting Research to Inform Policy

About Alabama Possible

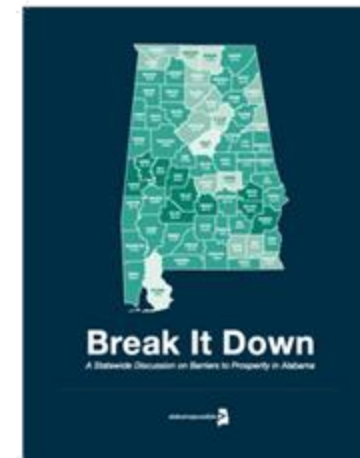
Alabama Possible is a statewide nonprofit organization that breaks down barriers to prosperity through advocacy, education, and collaboration.



Alabama College Attainment Network



Higher Education Alliance

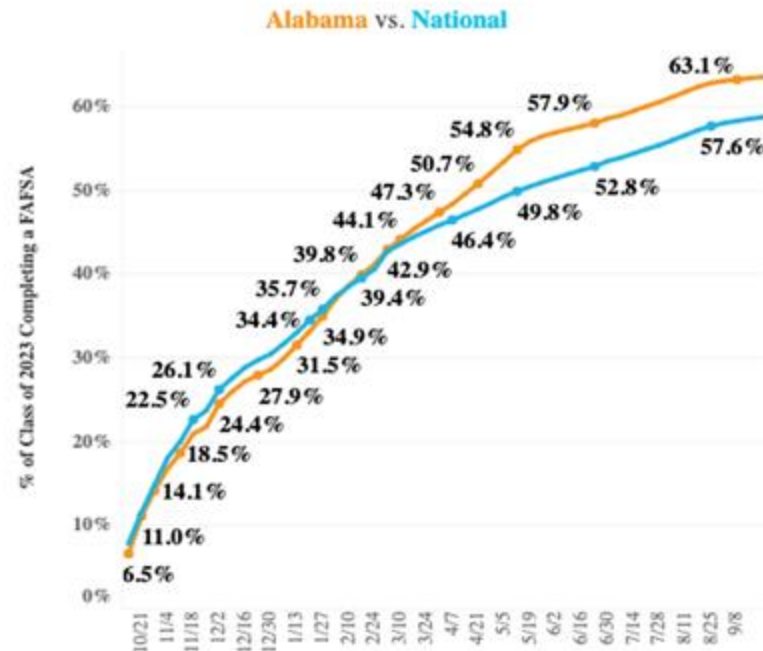


How ACHE + Alabama Possible Are Working Together

Policy + Practice

- (Re)Engage Alabama
- FAFSA Completion

Estimated Percent of Seniors Completing a FAFSA





SETTING THE CONTEXT:
Missouri

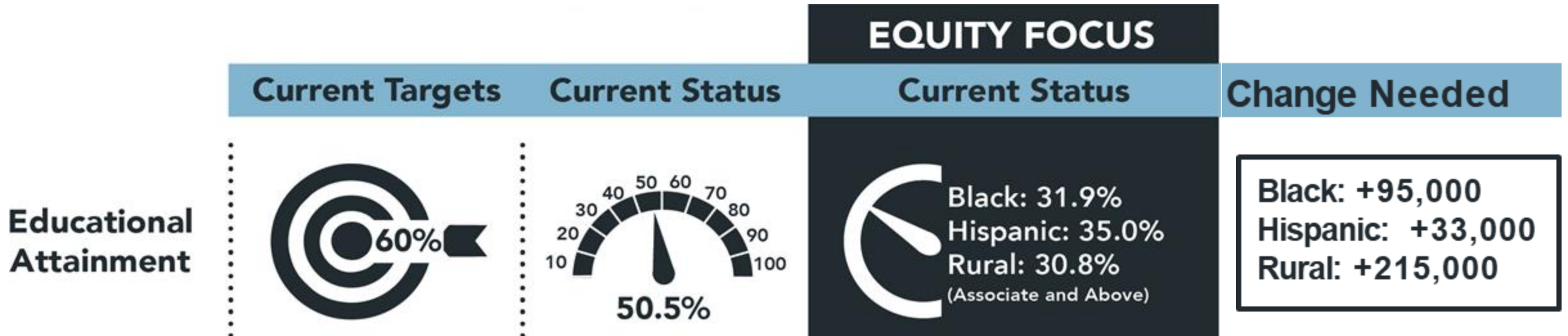
About MDHEWD

- Missouri Department of Higher Education AND Workforce Development - one of only two states with coordination of these systems under one agency
- Oversight body is Coordinating Board for Higher Education - 9 member board with no more than 5 members from any one political party
- Strategic plan adopted by CBHE in December 2021 with educational attainment and labor force participation goals



Missouri's Big Goal:

60% of Adults with a Postsecondary Credential by 2030



About MOCAN



MOCAN

MISSOURI COLLEGE &
CAREER ATTAINMENT NETWORK

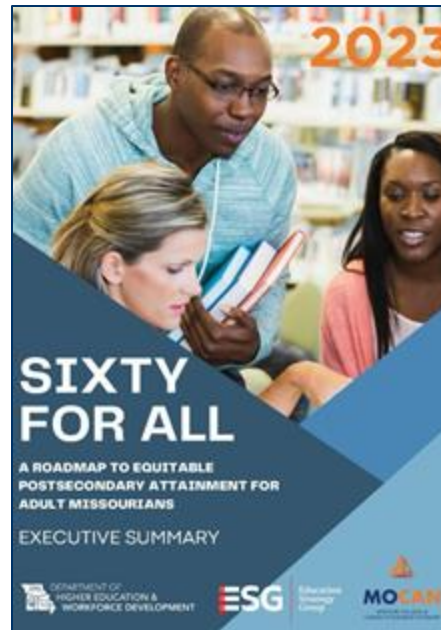
Transform lives by creating more equitable, statewide postsecondary education outcomes.

Increasing postsecondary access, affordability, and completion for students living in low-income communities, particularly those who are Black, Hispanic, and rural students.



How MDHEWD + MOCAN Are Working Together

- Adult Learner Strategy
- FAFSA Completion



Panel Discussion Questions

- What unique strengths do government agencies and statewide nonprofits each bring to efforts to increase attainment?
- What do you see as key elements for successful collaboration between SHEEOs and CANs?
- About 26 states have attainment goals closing out in 2025, what role have CANs had in reaching it? Or what role could they have going forward?
- How have you collaborated on critical issues right now, e.g. FAFSA completion, post-pandemic enrollment, equity?
- What role do CANs have in supporting non-traditional learners and how have your CANs worked with your SHEEO to support adult attainment?
- Have there been areas where you found it best not to work together?
- Are there areas where your missions do not fully align?
- What advice do you have for other states?