



Exploring a New Frontier for National ASAP Replication Scaling

SHEEO | ASAP College Completion Coalition Learning Community

November 13, 2024



SHEEO

State Higher Education
Executive Officers Association



Session Agenda

SHEEO Welcome & Intro

Dr. John Lane, SHEEO

Background and Project Overview

Dr. Katie Giardello, CUNY ASAP

Lessons Learned Brief Overview

Sakshee Chawla, SHEEO

State Panel Discussion

Moderator: Dr. John Lane, SHEEO

Audience Q&A

Informal policy advocacy discussion

State Panel Participants

Dr. Cynthia Armendariz
Colorado Dept of Higher Education

Dr. Erica Orians
Michigan Community College Association

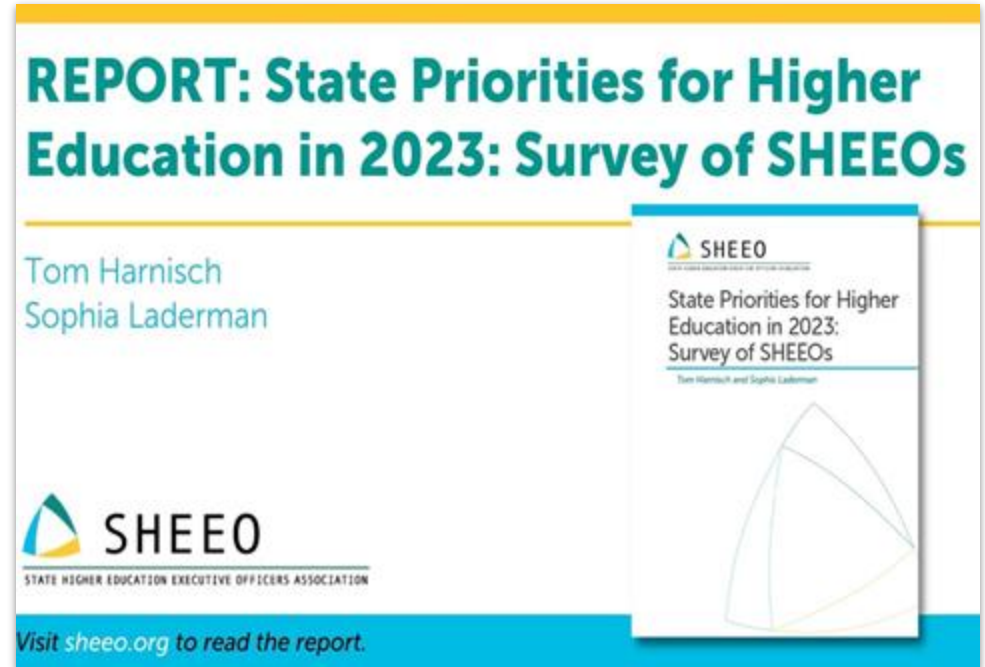
Maria Heidkamp
New Jersey Council of County Colleges

Dr. Patrick Crane
North Carolina Community College System

Summer Kenneson
WA State Board for Community & Technical
Colleges

State Higher Education Priorities

- ❖ College Completion & State Attainment Rates
- ❖ Addressing Equity Gaps
- ❖ Workforce and Economic Development



SHEEO Mission



Promoting equitable attainment through

- Statewide public policies and academic practices
- Capacity development
- Research about evidence-based best practices
- Coalition development

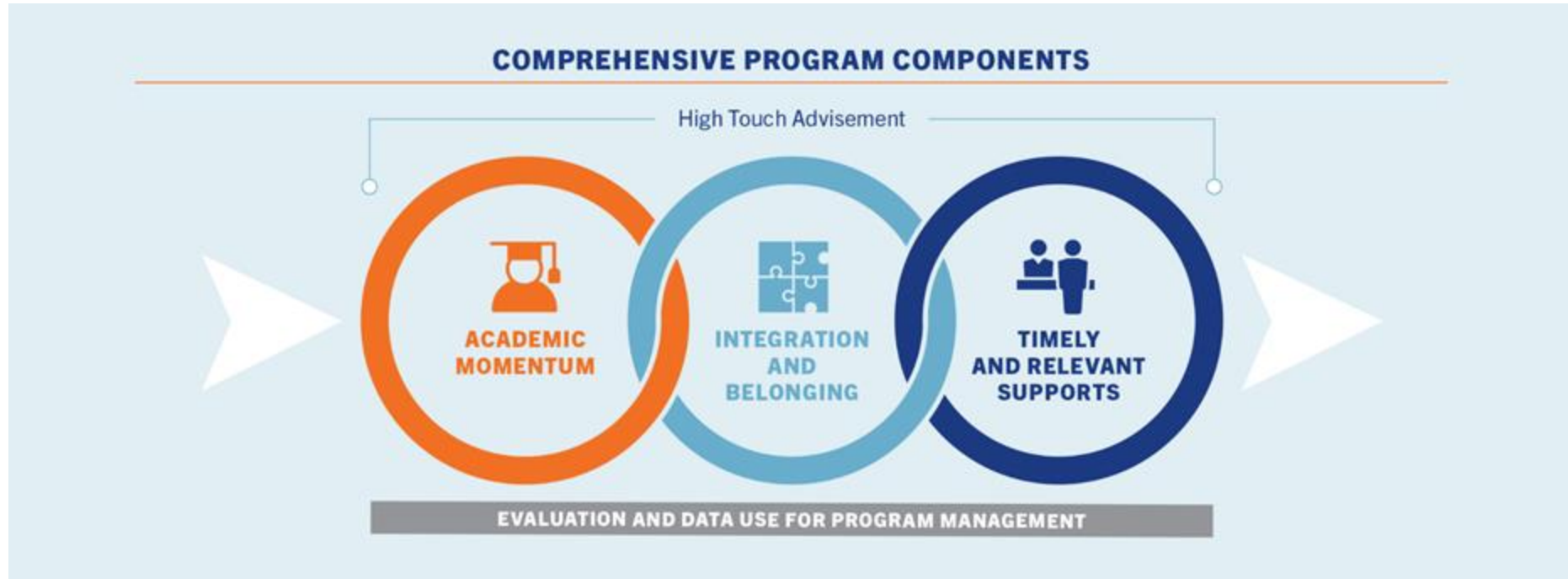


WHAT IS CUNY ASAP?



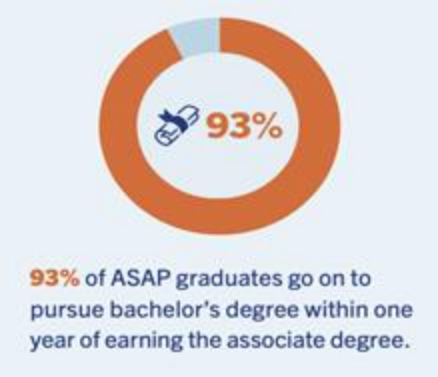
CUNY | **ASAP** ►
NATIONAL REPLICATION
COLLABORATIVE

The Accelerated Study in Academic Programs (ASAP) Model

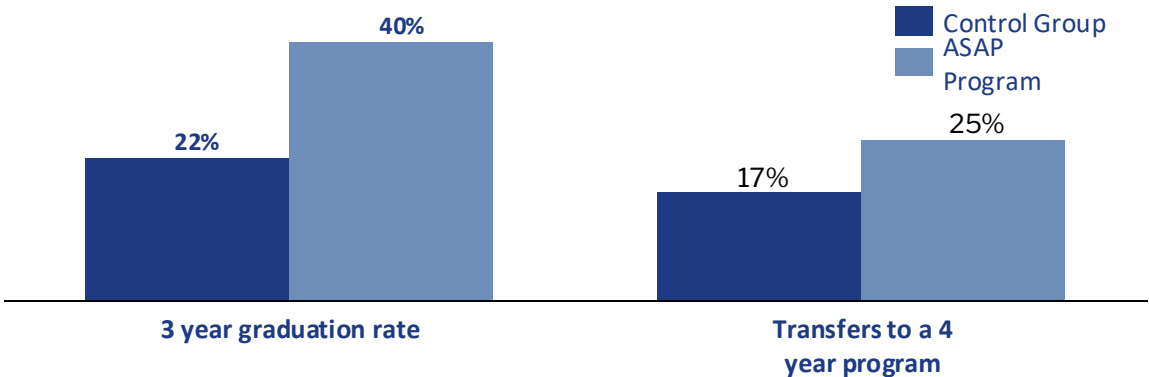


RIGOROUS EVIDENCE BASE FOR CUNY ASAP | ACE & REPLICATED PROGRAMS

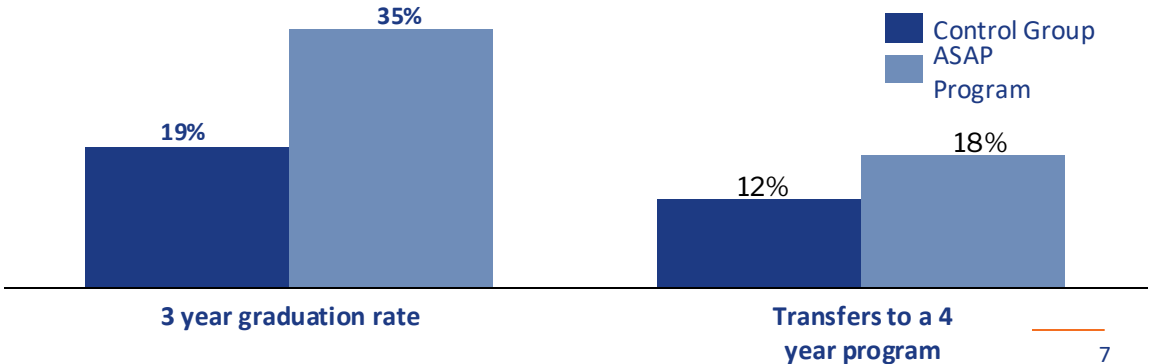
Two randomized evaluations in NYC and OH both show it doubles graduation rates and increases transfers to 4-year colleges by 50%.



ASAP Program Evaluation : 2015 CUNY (New York)

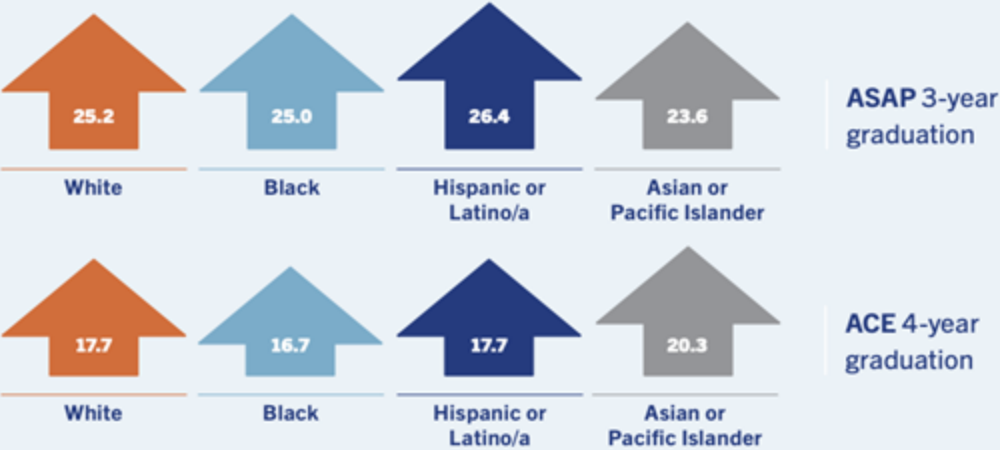


ASAP Program Evaluation : 2020 Ohio



CUNY ASAP|ACE COMPLETION IMPACT & ROI

ASAP|ACE has been shown to increase graduation rates across race/ethnicity, with program students graduating at higher rates than the comparison/control for each group.

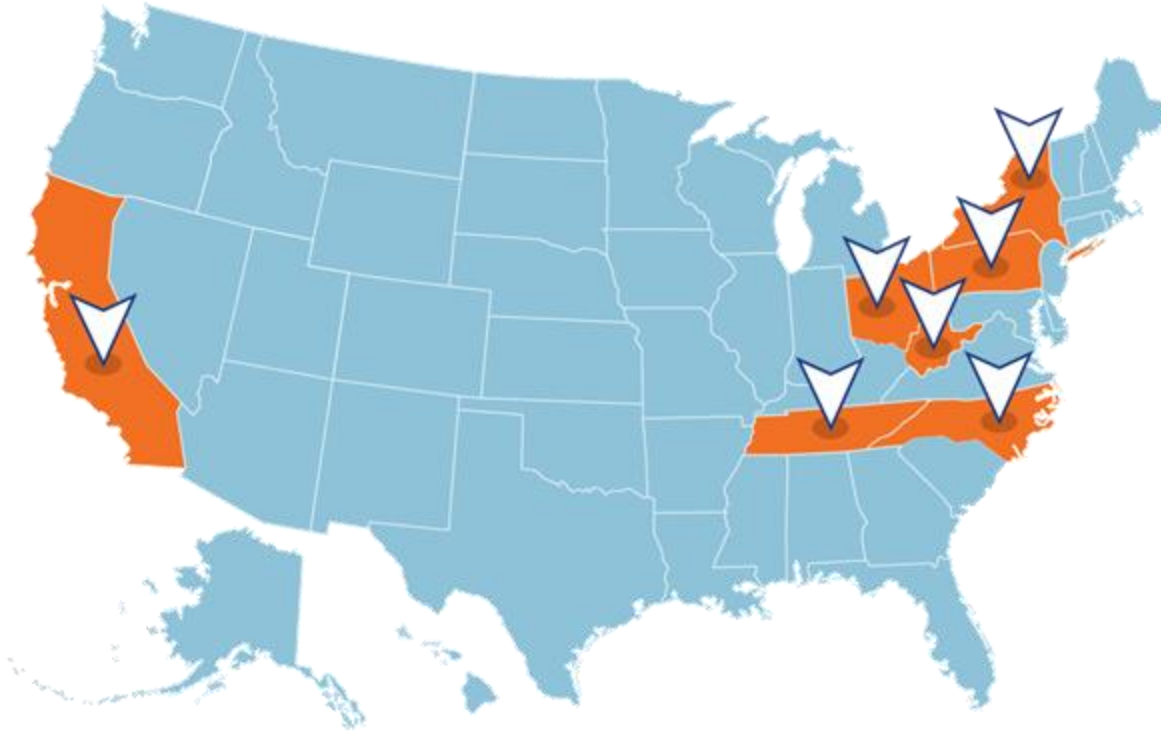


ASAP is estimated to produce **\$3.5:1⁵** Return on Investment (ROI) from projected earnings increases, tax revenues, and reduced use of public services.



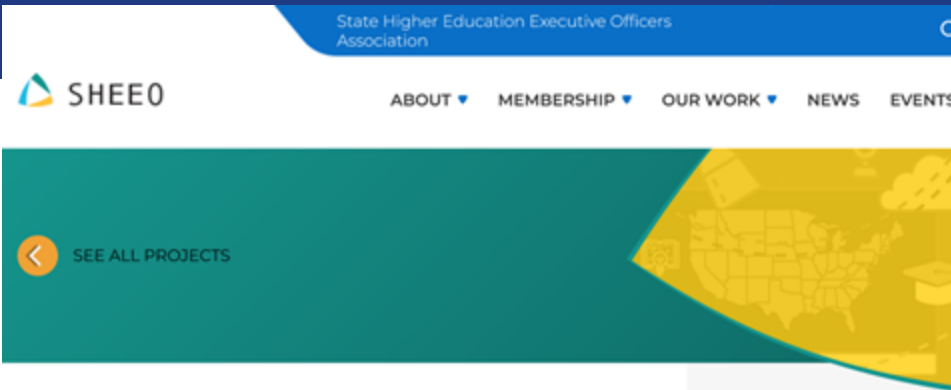
Ohio replication program increased earnings by **11%⁶** and nearly **doubled the three-year graduation rate⁷**—35% vs. 19% for the comparison group.

THE CUNY ASAP NATIONAL REPLICATION COLLABORATIVE – A NATIONAL MOVEMENT IN MOTION



Since 2015, CUNY ASAP | ACE has been replicated at nearly 40 colleges in 7 states (and counting).
(Ohio, California, New York, Tennessee, West Virginia, Pennsylvania and North Carolina)

SHEEO | ASAP College Completion Coalition Learning Community



SHEEO|ASAP College Completion Coalition Learning Community

SHEEO is partnering with the City University of New York's (CUNY) Accelerated Study in Associate Programs (ASAP) Accelerate, Complete, and Engage (ACE) National Replication Collaborative. SHEEO will partner with CUNY ASAP to establish and launch a new learning community among state higher education leaders to replicate the CUNY ASAP|ACE model at scale to increase college completion rates within their community college sectors. Five states will be selected for \$50,000 planning grants to facilitate their participation in the inaugural learning community.

CUNY ASAP|ACE Program

ACCELERATED
STUDY IN
ASSOCIATE
PROGRAMS
(ASAP)

VIEW
BACKGROUND
VIDEO

ASAP|ACE
REPLICATION

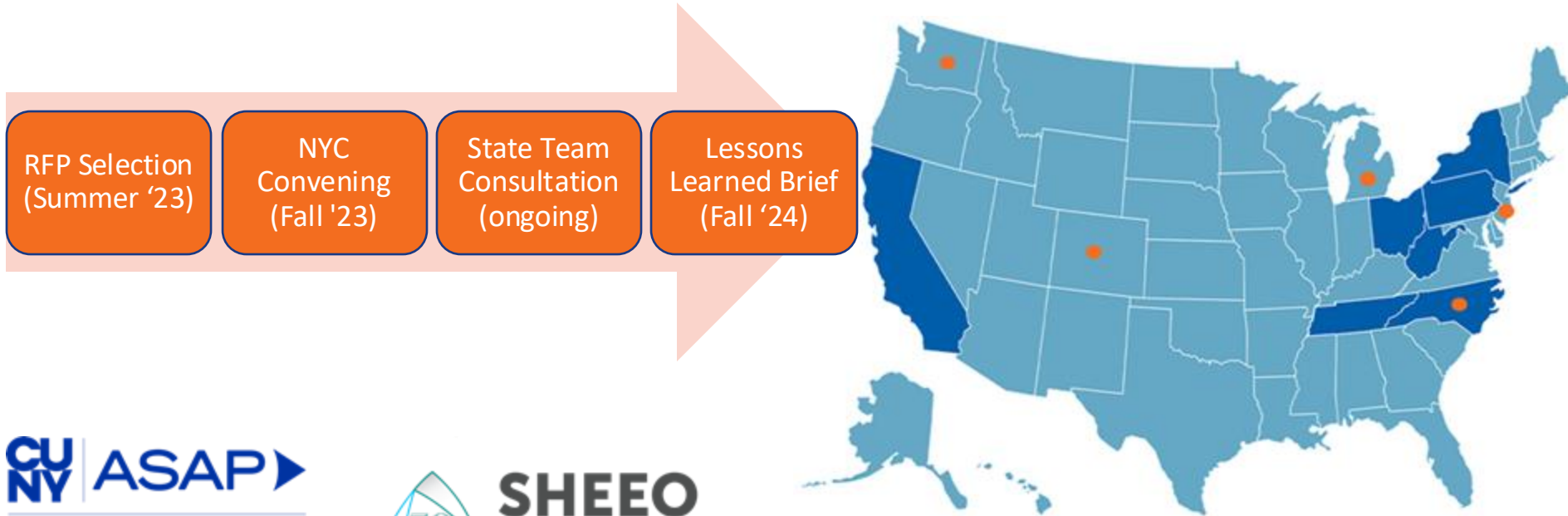


SHEEO

State Higher Education
Executive Officers Association

SHEEO | ASAP COLLEGE COMPLETION COALITION LEARNING COMMUNITY PROJECT MILESTONES

A key objective of this work was to address racial equity gaps through strategic statewide scaling of the ASAP model.



LESSONS LEARNED BY PRIORITY AREA

1

Coalition Building & Making the ROI Case

- Engaging diverse stakeholders
- Building institutional readiness
- Make the ROI case for replication

2

Aligning ASAP Replications to State Higher Ed Priorities

- ASAP Replication as a workforce development initiative
- Align ASAP with Guided Pathways efforts

3

Planning for Equity-Based, System-Scaled Replication

- Targeting underserved populations & addressing equity gaps
- Navigating political & policy shifts
- Ensuring statewide consistency & local flexibility
- Leveraging data & evaluation

4

Sustainable Budgeting & Productive Funding Models

- Understanding & estimating costs
- Leveraging braided funding models
- Navigating challenges in state funding & political landscapes
- Role of short-term funding & philanthropy

COALITION BUILDING & MAKING THE ROI CASE

Engaging Diverse Stakeholders

1. Institutional interest and readiness are critical to the success of scaled replication
2. States emphasize adapting college engagement to maximize success (e.g., timing, method)
3. Replication strategy should recognize unique challenges of campuses (e.g., rural, urban)

Building Institutional Readiness

1. Strong leadership commitment and early, active involvement in the system plays a key role
2. Long-term financial and operational sustainability were important
3. It was also important to effectively track data and use a data-driven approach to continuous improvement
4. Resource limitations, initiative fatigue, and hesitation about replicating a NYC-based program pose as a barrier

Make the ROI Case for Replication

1. Consider tailoring the ROI argument to the local context, focus on financial benefits, and highlight student outcome improvements
2. Highlight connection between student retention and completion with economic and workforce development goals
3. Align ASAP with existing state funding models and initiatives

ALIGNING REPLICATION TO STATE HIGHER ED PRIORITIES

Frame ASAP within State Higher Ed Priorities

1. Integrate with existing strategic goals and initiatives to maximize relevance and sustainability
2. Building on existing coalitions that improve retention and graduation rates, particularly for students from underrepresented backgrounds

ASAP Replication as a Workforce Development Initiative

1. Workforce development is a top priority with strong potential for alignment with ASAP replication
2. Alignment with state's funding model directly ties ASAP replication to the state's economic development programs

Align ASAP with Guided Pathways Efforts

1. Link ASAP with frameworks like Guided Pathways to streamline students' academic journeys and improve completion
2. Both initiatives emphasize clear academic planning, proactive advising, and support systems
3. Aligning different initiatives creates a more comprehensive and cohesive approach to student success

PLANNING FOR EQUITY-BASED, SYSTEM-SCALED REPLICATION

Targeting Underserved Populations & Addressing Equity Gaps

1. Underserved student populations for each state were defined by the state's demographic and institutional landscape
2. Consider broadening equity definitions to account for demographic, income, geography, full/part-time enrollment differences

Navigating Political & Policy Shifts

1. States adapted in the face of changing political and policy landscapes that impacted their equity-focused work
2. Balance between statewide consistency and local flexibility is essential for equity-driven, system-scaled replication

Leveraging Data & Evaluation

1. Participating states reported gains in their awareness of completion disparities among racially minoritized groups
2. States strengthened data collection and analysis that improved methods for disaggregating data to understand gaps

SUSTAINABLE BUDGETING & PRODUCTIVE FUNDING MODELS

Understanding & Estimating Costs for ASAP Replication

1. Develop a clear understanding of comprehensive costs associated with successful replication (e.g., direct support, textbooks)
2. Understand cost estimation varies based on local contexts, existing infrastructure, and complementary funding
3. Projecting gains from ASAP proved challenging especially given costs do not remain fixed over time

Leveraging Braided Funding Models

1. Use braided funding models by combining institutional dollars, philanthropic investments, and public funding lines
2. Braided funding model offers flexibility and sustainability
3. Identify complementary programs that can be used to leverage support toward ASAP replication

Navigating Challenges in Funding & Political Landscapes

1. Given state budget limitations, rely on short-term and philanthropic funds as needed, especially when long-term state funding is uncertain
2. Long-term estimation of ASAP replication influenced by lesser-known economies of scale

FINAL DELIVERABLE RELEASED TODAY

The final deliverable that we previewed today is now available on the [SHEEO website](#)



Exploring a New Frontier for National ASAP Replication Scaling

SHEEO/ASAP COLLEGE COMPLETION
COALITION LEARNING COMMUNITY

Sakshee Chawla and Katherine J. Giardello

November 2024





Panel Discussion

Moderator: Dr. John Lane, Vice President for Academic Affairs and Equity Initiatives, SHEEO

State Team Participants:

- **Dr. Cynthia Armendariz**, Managing Director, Colorado Dept of Higher Education
- **Dr. Erica Orians**, Vice President and Executive Director of the Michigan Center for Student Success, Michigan Community College Association
- **Maria Heidkamp**, Chief Innovation and Policy Officer, New Jersey Council of County Colleges
- **Dr. Patrick Crane**, Vice President of Strategic Initiatives, North Carolina Community College System
- **Summer Kenneson**, Director of Policy Research, WA State Board for Community & Technical Colleges



SHEEO

State Higher Education
Executive Officers Association



JOIN OUR MOVEMENT IN MOTION!

BLOG Published September 22, 2022 • 5-minute read

What if CUNY ASAP Was Replicated from Coast to Coast?



OPINION > CONGRESS BLOG

THE VIEWS EXPRESSED BY CONTRIBUTORS ARE THEIR OWN AND NOT THE VIEW OF THE HILL

There's a proven fix for an urgent education problem — Congress should embrace it

BY KELLY MCMANUS AND SHRUTIKA SABARIWAL, OPINION CONTRIBUTORS - 06/03/23 7:00 PM ET

SHARE TWEET

