

Constellation of support



A Capacity-Building Approach to Institutional Change

>5
years

>500
institutions

>5mill
students



Student-Ready
STRATEGIES

Student-Ready Strategies

Guiding Principles

Vision

We envision a world in which colleges and universities believe every student can succeed and purposely evolve to ensure they do.

Mission

We partner, plan, and problem solve with colleges and universities as they evolve to ensure the success of diverse students with complex lives.

Values

Center Our Mission

Our portfolio reflects our unwavering commitment to improving the academic and career outcomes of diverse students with complex lives.

Care about Context

We know effective solutions must be customized. We prioritize co-creation and design around our partners' context and students.

Engage with Authenticity

We recognize and appreciate our partners as people and seek to build open and honest connections with them.

Manage the Mental Load

We keep an eye on the details and protect your interests, so you can focus on your students and constituents.



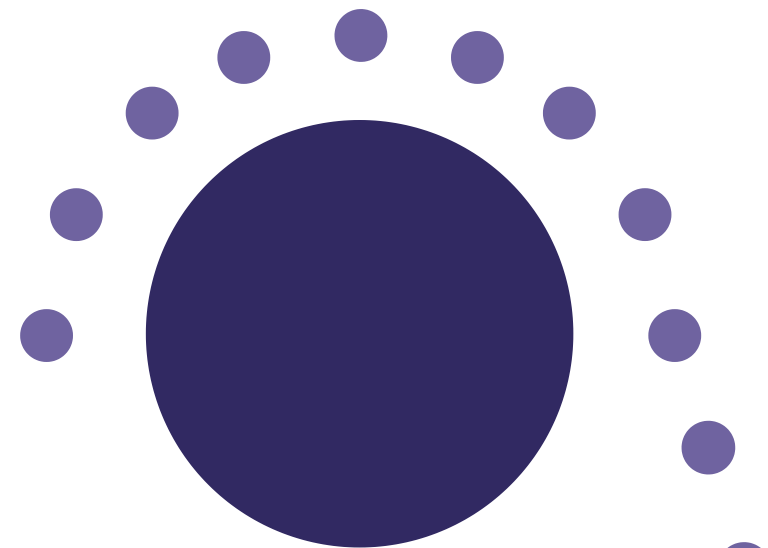
We know what works.

States have passed policies to scale evidence-based practices.

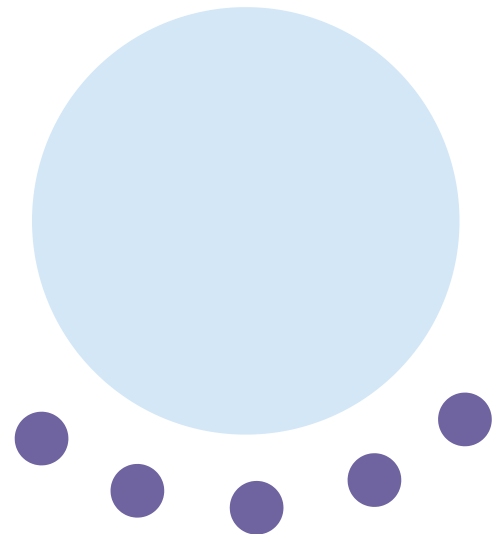
So, why hasn't every institution implemented them?

To implement with fidelity...

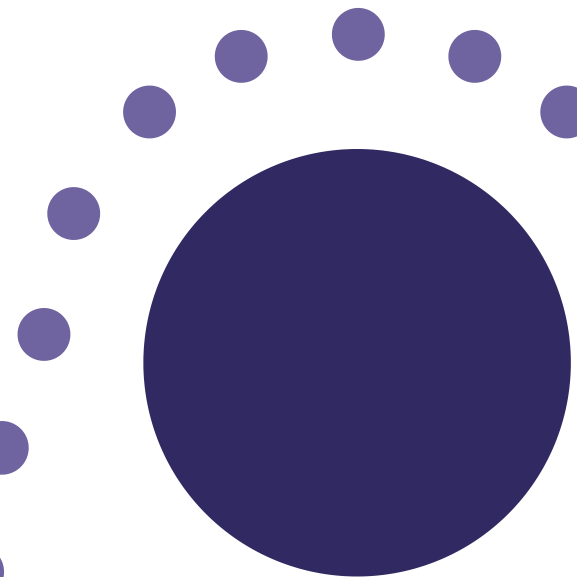
UNDERSTAND



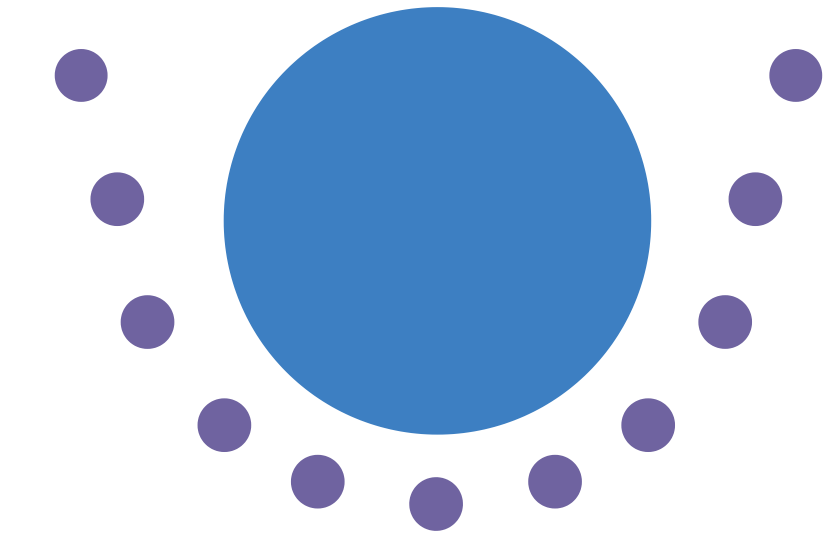
DESIGN



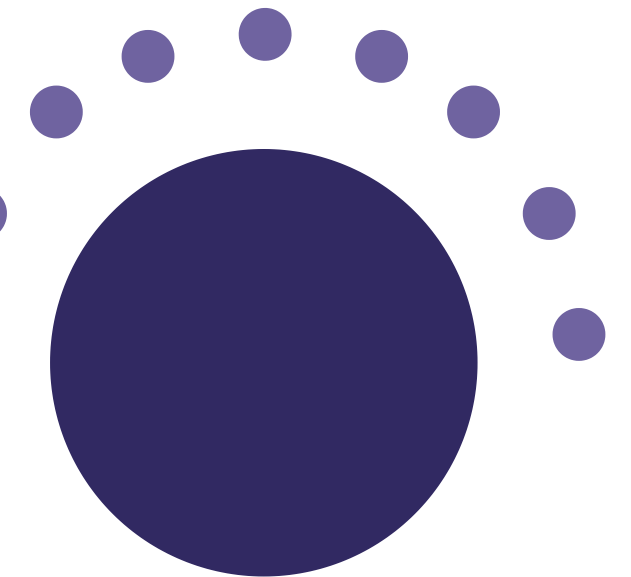
SOCIALIZE



FORMALIZE



IMPLEMENT





Capacity

Time

Expertise

Creativity

Motivation





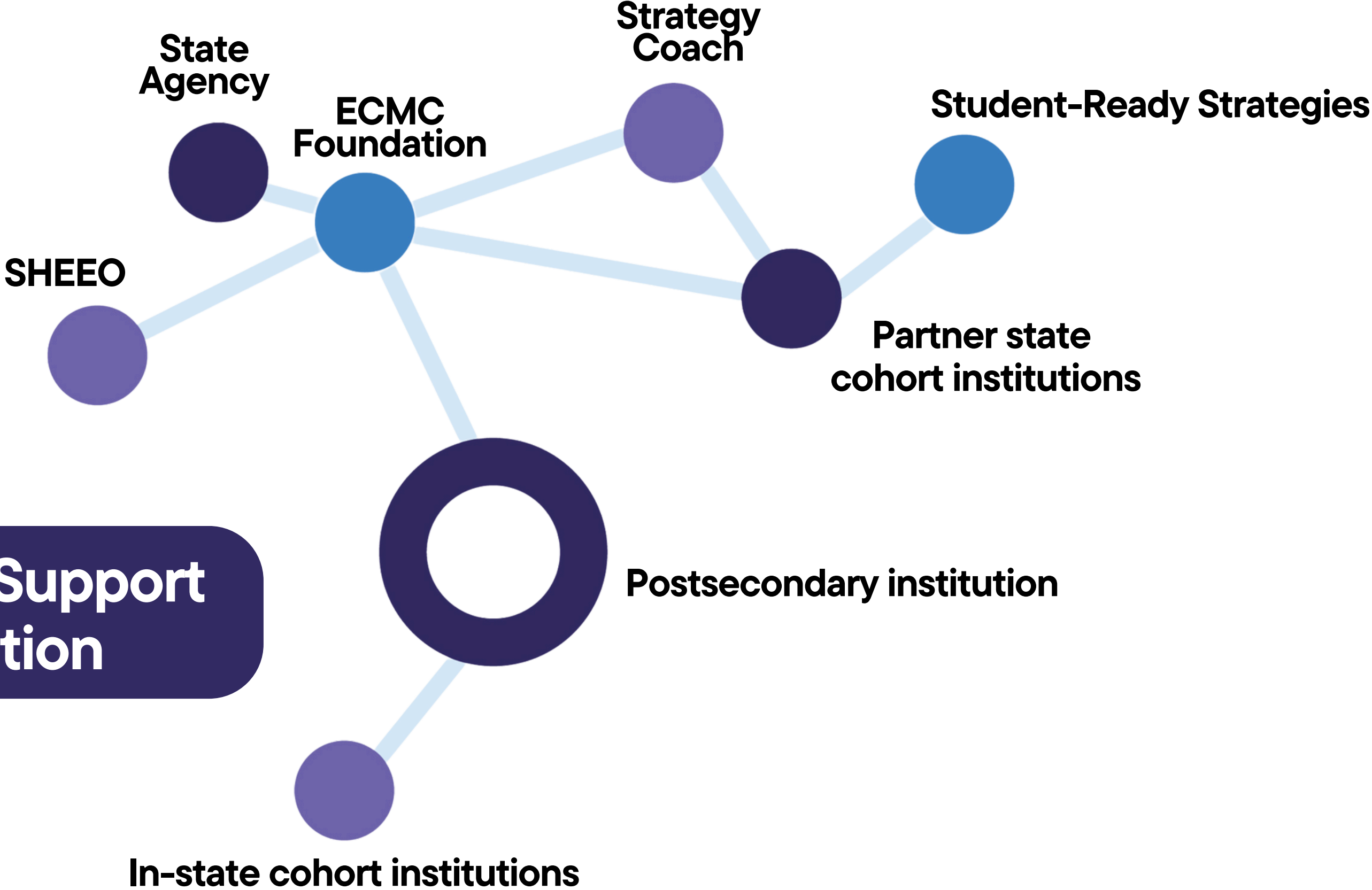
Constellation of Support

✦✦ A three-year initiative to build institutional capacity and implement sustainable student success reforms

✦✦ Two selected state or system agencies will:

- Serve as cohort coordinators
- Assist in the recruitment of eight institutional participants
- Identify a common student success strategy for their state cohort

**A Constellation of Support
for each institution**



Capacity-Building Technical Assistance

Institutional teams will:

- ✦ Participate in **three in-person workshops over 18 months** that provide them with actionable knowledge, as well as time to collaborate with their team and cohort
- ✦ Participate in quarterly synchronous **expert coaching** with customized, intentional agendas and a focus on driving progress
- ✦ Have **ongoing, campus-level, asynchronous support** between these checkpoints through Constellation - SRS's virtual technical assistance delivery tool

Additional benefits



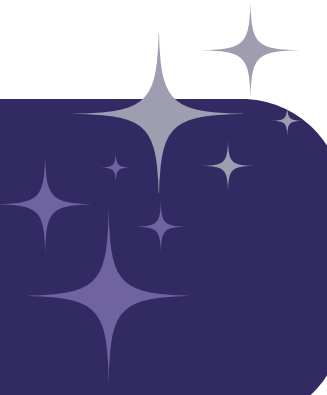
For institutions

Institutions committed to this process will be **directly resourced** to complete this work, with each receiving a discretionary \$20,000 grant support project costs, like travel to workshops or release time for faculty or staff.

For SHEEO agencies

SRS will provide technical assistance support directly to the state or system agencies, completing a **legislation, policy, and process review** to ensure the state's policy environment is aligned with the strategy implementation by the institutions.

Student Success Strategies include:



- ✦ Credit for Prior Learning
- ✦ Corequisite Support / Developmental Education Reform
- ✦ Multiple Measures Placement for Gateway Courses
- ✦ Satisfactory Academic Progress (SAP) Reform
- ✦ Open Educational Resources
- ✦ Comprehensive Institutional Policy Reform



SHEEO agency role

- Serve as **cohort coordinators**, recruiting and leading a group of up to eight institutions
- Ensure that the selected **strategy aligns with statewide goals** and meets the needs of institutions
- Serve as a **communications partner** among SHEEO, SRS, and the selected institutions
- Assist in determining **workshop locations, dates, and logistics** to ensure accessibility and engagement for participating institutions
 - SRS is resourced to support the workshops, however, assistance with the things outlined here is crucial
- Help to **ensure institutional participation** in structured workshops, quarterly coaching, and ongoing virtual assistance through Constellation
- Work closely with SHEEO and SRS to **track progress and scale implementation** efforts



Constellation

powered by Student-Ready Strategies





Imagine this.

The major structural change you are making at your institution comes with funding!

You get to hire for a whole new position.

What does that person's job description include?

Bolstering institutional capacity means having someone..

- ✦ Guide teams through a **change management process**
- ✦ Debrief them on the **relevant research**
- ✦ Help them examine and embrace your **institutional context**
- ✦ Support **goal setting** and **track progress** toward improved student outcomes
- ✦ Frame and inform their **strategic decisions**
- ✦ Create all their **first drafts** - policy language, process guides, student handouts, and more

Key Features of Constellation

- Does much of the work needed for implementation
- Responds to institutional context and decisions
- Centered on people – built for teams to work asynchronously
- On-campus, 24/7 complement to the other types of support they might get through convenings and coaching
- Curated by experts without reliance on AI to create content or assets

Teams put in 1-2 hours per week over the course of one year.

Constellation takes an estimated 500 hours of work off their shoulders.



Capacity

Time

Expertise

Creativity

Motivation



Directly addressing capacity needs

Time

Saves an estimated 500 hours of work

Expertise

Brings the evidence base to the institution and uses proven theory of change

Creativity

Creates all the first drafts, so they can refine instead of starting from scratch

Motivation

This must be in place to make the most of Constellation.

Instructions to Apply

- Interested state or system teams should:
 - Complete the letter of interest according to the information on SHEEO's website
 - Submit a single PDF of the completed application to Dr. Josclynn Brandon at info@studentreadystrategies.com no later than 5:00 pm PST on **March 31**
- Selected states will be notified on or before **April 11**



Contact SRS



Dr. Josclynn Brandon
Vice President of Partnerships and Operations
josclynn@studentreadystrategies.com



Sarah Ancel
Founder and CEO
sarah@studentreadystrategies.com

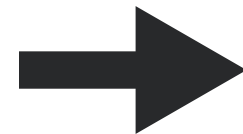


Dr. Vanessa Keadle
Partner and CSO
vanessa@studentreadystrategies.com

How are custom assets created? It's as easy a 1-2-3...



1 Project team gathers information and makes decisions

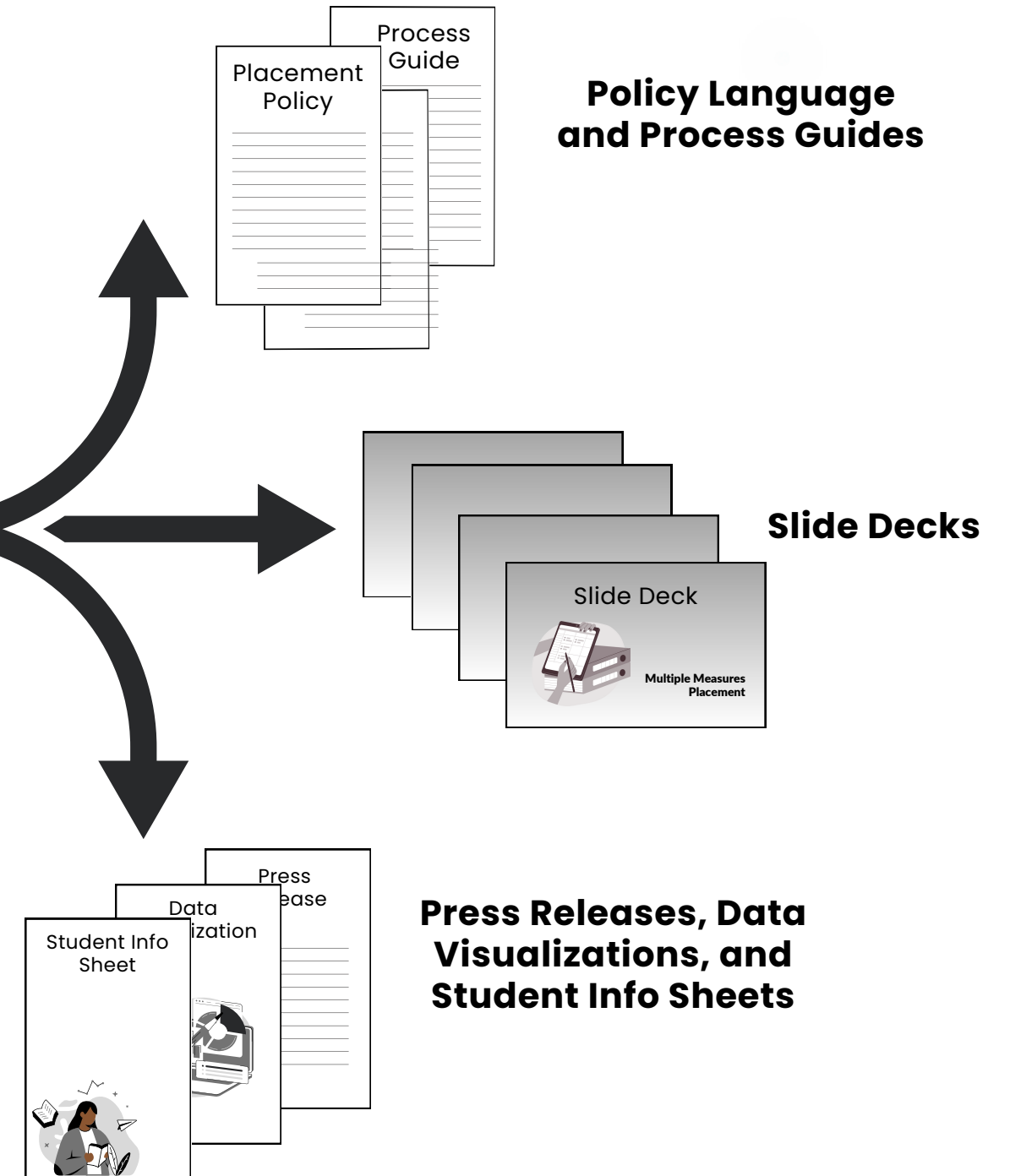
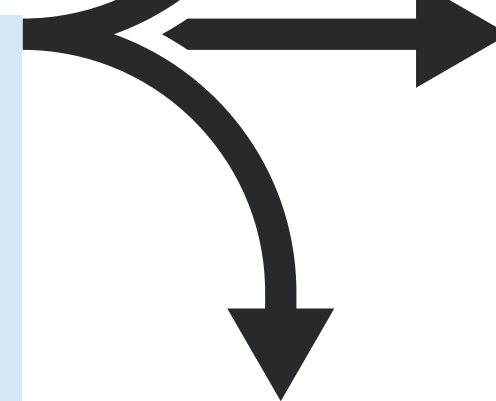


What is the effective date of the policy?

Which of the following categories will be used for placement at your institution?

- High School Grades
- Standard Examinations
- Student Self-Placement

2 When prompted, the project lead inputs decisions into Constellation



3 Constellation uses that information to create your custom assets, like the examples above