

From ASAP to Boost: How North Carolina Adapted the CUNY ASAP Model for Student Success & Workforce Alignment



SHEEO HEPC Conference
August 12, 2025

Agenda

- Scaling evidence-based practices at the state level
- The CUNY ASAP model
- NC Boost: Origins, Design, Implementation
- State policies to support of evidence-based practices



Theory of Change

- Too often, policy decisions and program investments are made without knowing if they will truly drive better outcomes
- Evidence and Evaluation:
 - 1) use what we already know from research to make better policy decisions
 - 2) build more knowledge to inform future decisions
- Use rigorous, causal research to identify and evaluate promising programs and policies

Bridging Research and Action



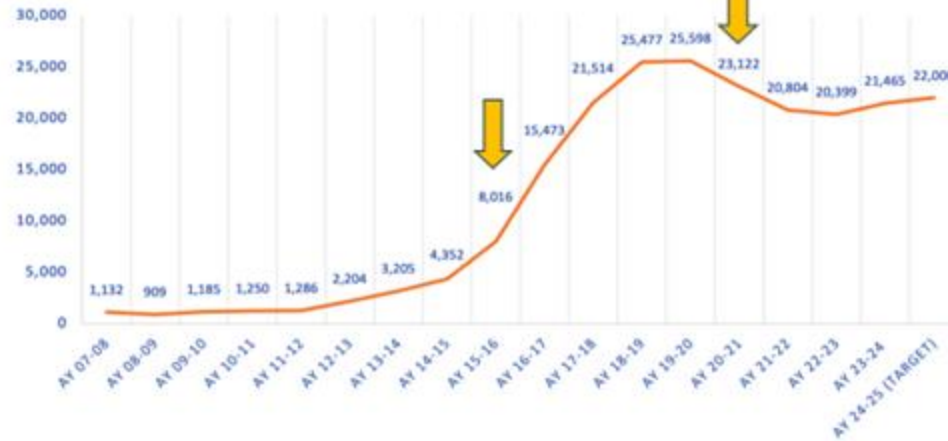
- Research problems and programs
- Identify and understand root causes
- Support evidence-based solutions



- Focus on systemic change
- Promote change at scale

CUNY ASAP'S ORIGIN AND SCALING STORY

ASAP Total Enrollment 2007-2024

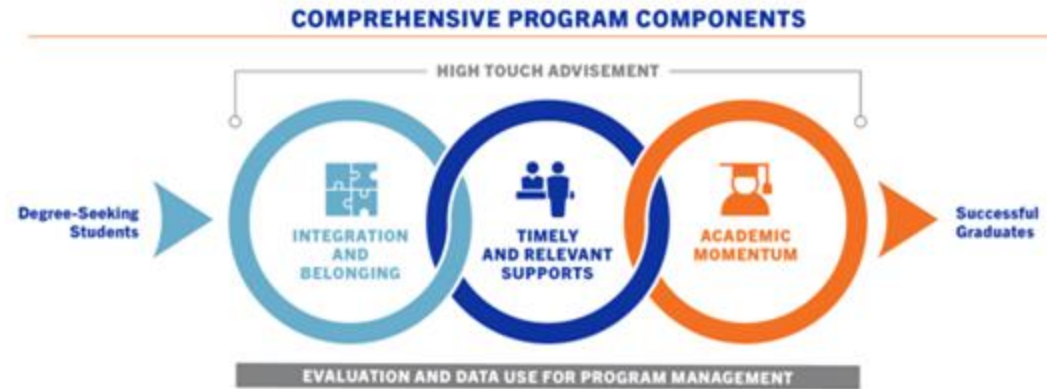


- 2006 CITY OF NEW YORK INVESTS \$19.5 MILLION IN CUNY ASAP PILOT
- 2007 CUNY ASAP LAUNCHES AT SIX SITES
- 2010 RANDOMIZED CONTROL TRIAL BEGINS
- 2012 FIRST WAVE OF EXPANSION BEGINS
- 2014 ASAP REPLICATES MODEL IN OHIO
- 2015 MDRC PUBLISHES FINDINGS, PRESIDENT OBAMA CITES ASAP AS MODEL
- 2015 CITY OF NEW YORK INVESTS \$77.4 MILLION IN FURTHER ASAP EXPANSION
- 2015 SECOND WAVE OF EXPANSION BEGINS
- 2017 ASAP MODEL REPLICATED IN CALIFORNIA, AND NEW YORK
- 2018 BCC HITS EXPANSION GOALS
- 2020 ASAP MODEL REPLICATED ACROSS COUNTRY
- 2022 ASAP RECOGNIZED IN ECONOMIC REPORT OF THE PRESIDENT
- 2023 REPLICATION ACROSS NEW YORK STATE
- 2025 NC STATEWIDE REPLICATION & CO COSI REPLICATION

OUR REPLICATION APPROACH

Our technical assistance is modeled after the components of ASAP.

- Foster belonging in the National Replication Collaborative
- Provide timely & relevant support to launch and sustain programs
- Collaborate with partners to drive academic momentum on campuses and nationwide



CONSORTIA STRUCTURE



CUNY ASAP Partner Colleges

- Recruitment
- Local program management
- Direct services to students
- Monitoring student progress
- Campus relationships + integration

CUNY Office of Academic Affairs

- Fiscal Administration
- Outreach & MarComm
- Program Administration + Policy Setting
- Professional Development
- Evaluation + Data Management

Where we started

THE UNC
SYSTEM



NC
COMMUNITY
COLLEGES
CREATING SUCCESS



SHEEO
State Higher Education
Executive Officers Association



John M Belk
Endowment
ELEVATE THROUGH EDUCATION



Belk Center
for Community College
Leadership and Research

SV | ASAP | ACE
NATIONAL REPLICATION
COLLABORATIVE



North Carolina State Policy Context

- **TrACE** – Cross-sector alignment with UNC
- **Propel NC – New community college funding model**
 - Eligible programs: Health Care, Engineering and Advanced Manufacturing, Trades and Transportation, Information Technology, and Public Safety and First Responders or an Associate of Arts, Associate of Science, or Associate of Engineering degree program that will lead to successful transfer and a higher-wage career in the region
- **Next NC Scholarship** - \$3,000 (minimum) for AGI < \$80,000
- **Projected workforce shortages** in high demand sectors
- **Regional strategies** - Legislative and State Board interest in regional collaboration

What Sets Boost Apart?

Workforce Focus

- Boost focuses on students in programs that lead to family-sustaining wage jobs
- Students need to be enrolled in programs aligned with Propel NC or on AA / AS transfer pathways

Regional Model

- To provide opportunity for students at small colleges, Boost offers a Regional Partnerships model for 2-3 colleges to collaboratively offer program services

Boost Model

Accelerated degree program that aligns state funding with enrollment in programs that lead to **high-demand, high-wage** careers to strengthen workforce pipelines in the state.



Financial Support

- Tuition & Fees covered by NextNC
- Textbook Stipend – Up to \$600/year
- Monthly Stipend (\$100/month) contingent on meeting with adviser



Advising

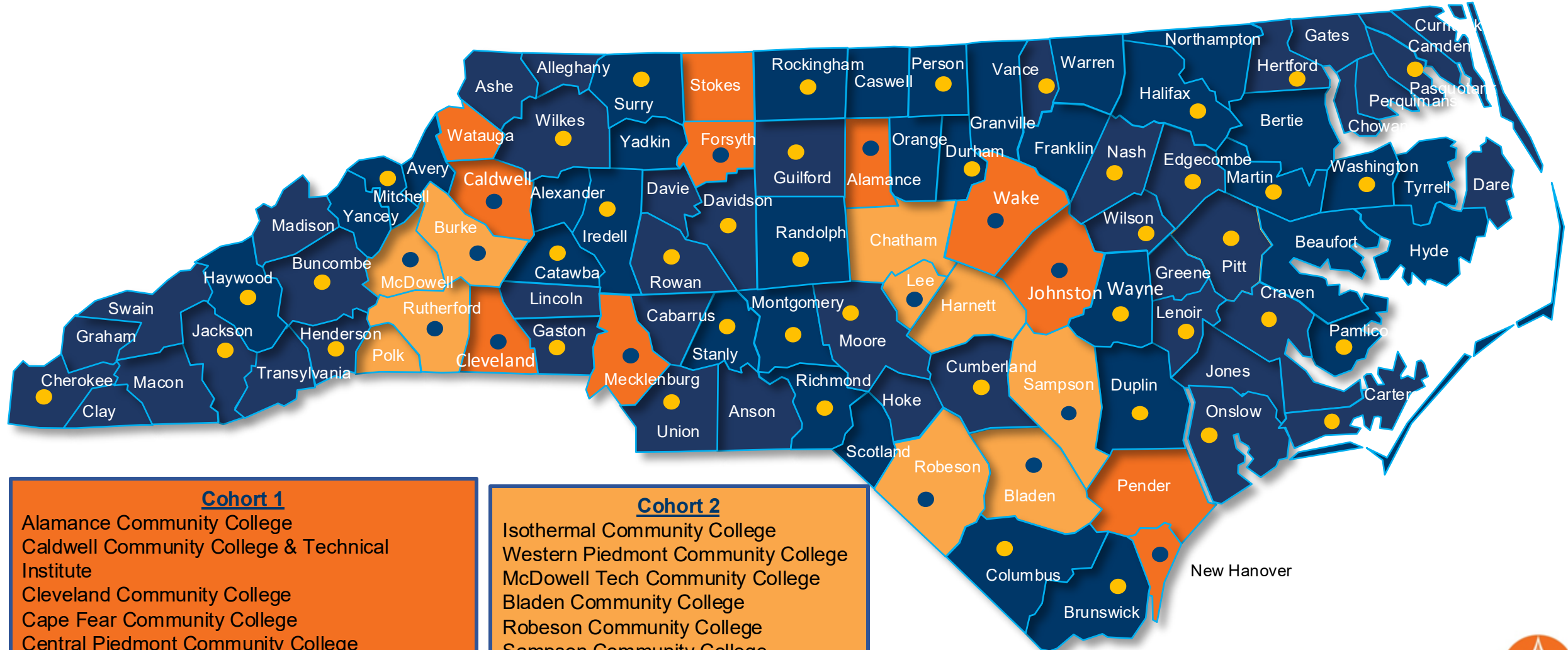
A dedicated Boost advisor with no more than 150:1 student-to-advisor ratio



Community

Cohort activities with other Boost students including social activities, career and transfer exploration activities.

Boost Colleges



Cohort 1

Alamance Community College
Caldwell Community College & Technical Institute
Cleveland Community College
Cape Fear Community College
Central Piedmont Community College
Forsyth Tech Community College
Johnston Community College
Wake Tech Community College

Cohort 2

Isothermal Community College
Western Piedmont Community College
McDowell Tech Community College
Bladen Community College
Robeson Community College
Sampson Community College
Central Carolina Community College

Boost Impact

15

**Community
Colleges**

5,325

Boost Students
Students

3,461

Boost Graduates
Boost students earning a degree
in 3 years

State Policy Context

How can state policies affect the launch and sustainability of programs like ASAP?

Total Funding

- Direct investment in evidence-based practices
- Weighted-enrollment funding formulas

Fund Student Success

- Outcomes-based funding
- Weights for success of target populations

Financial Aid

- Robust need-based aid (broad eligibility, cover COA)
- Promise programs

Student Supports

- Developmental education reform
- Guided pathways
- Robust data systems

Discussion & Questions

Interested in learning more about the
CUNY ASAP Replication process?

Click [here](#) or scan the [bit.ly](#) qr code:

