

The Minnesota Way: Equity in Higher Education



Speakers Today

Carlos Mariani Rosa

Executive Director

Minnesota Education Equity Partnership (mneep.org)

Dennis Olson

Commissioner

Minnesota Office of Higher Education (ohe.mn.gov)

Josiah Litant

Executive Director

Minnesota P-20 Education Partnership (ohe.mn.gov/p20)

Debt & Collective Grounding



Debt & Collective Grounding

Carlos Mariani Rosa

Debt & Collective Grounding

MnEEP acknowledges that here in Minnesota – as in many other states in the U.S. - most of us live today and every day on land taken from Indigenous people. It is essential to understand the longstanding history that has brought us to reside and benefit from this land and to seek to understand our place within the history of settler colonialism and racism. Land acknowledgments do not exist in the past tense or historical context only: the ideology and actions that gave rise to present ownership of land has shaped our state such that it continues to challenge our ability to build educational systems that produce equal opportunity of excellence for all our people, including our First Nations. We need to build the will and skills to overcome this legacy.

Minnesota Education Equity Partnership (MnEEP) Mission

MnEEP transforms systems, structures, and public narratives to advance race equity and excellence in education.

We envision a racially just society in which each student achieves their full potential.

Equity Matters.	Every child deserves to achieve their full potential for success and excellence regardless of race, creed, nationality, or class
Justice Matters.	We believe in the validity of each lived experience.
History Matters.	It is vital to address systems, structures and public narrative change by honoring the histories of communities of color and American Indian communities.
Relationships Matter.	Cross-cultural dynamics and collaborative relationships are key to changing systems, structures and public narratives.
Self-Actualization Matters.	The ability of students to be engaged learners—to understand themselves, their histories, their identities, and the world—is necessary to build critical thinking skills to release their power in shaping themselves and the world.

MnEEP 2024 Annual Report – Actions to Meet Challenges

Connected **more than 400** higher-ed leaders, staff, faculty & students at our higher-ed convenings

Provided race equity professional development training to **more than 1100 educators in Minnesota school districts**

Convened **more than 100 district leaders** across Minnesota to center Safe & Supportive Schools for EL & immigrant students

Led collaborative networks to advance race equity across education systems through our

- Research Collaborative Table
- College Race Equity Advocacy Advisory Council (CREAAC)
- Race Equity for Accelerated Learning Network
- Emerging Multilingual Learners Network

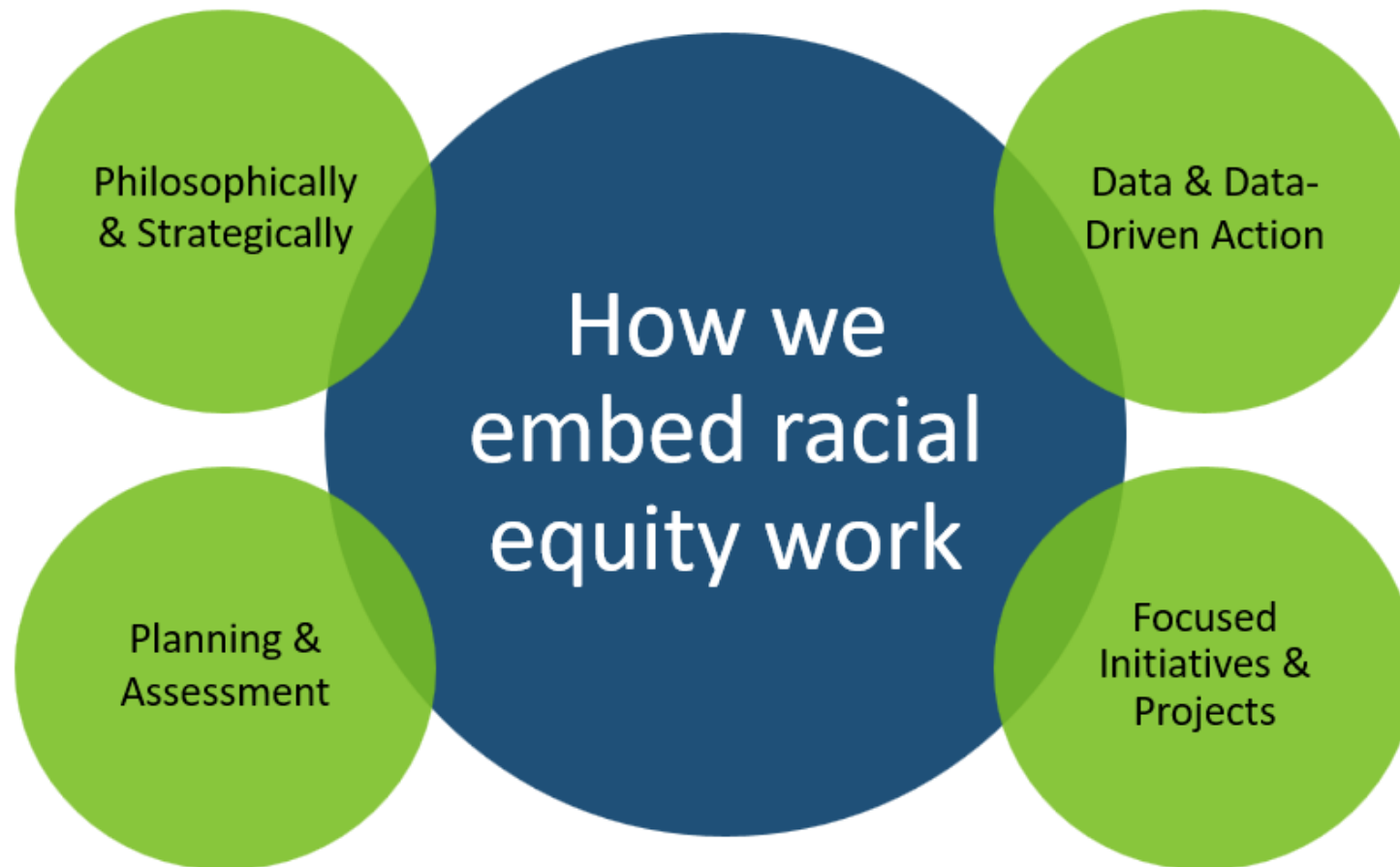
Thank You



What is MNP20?

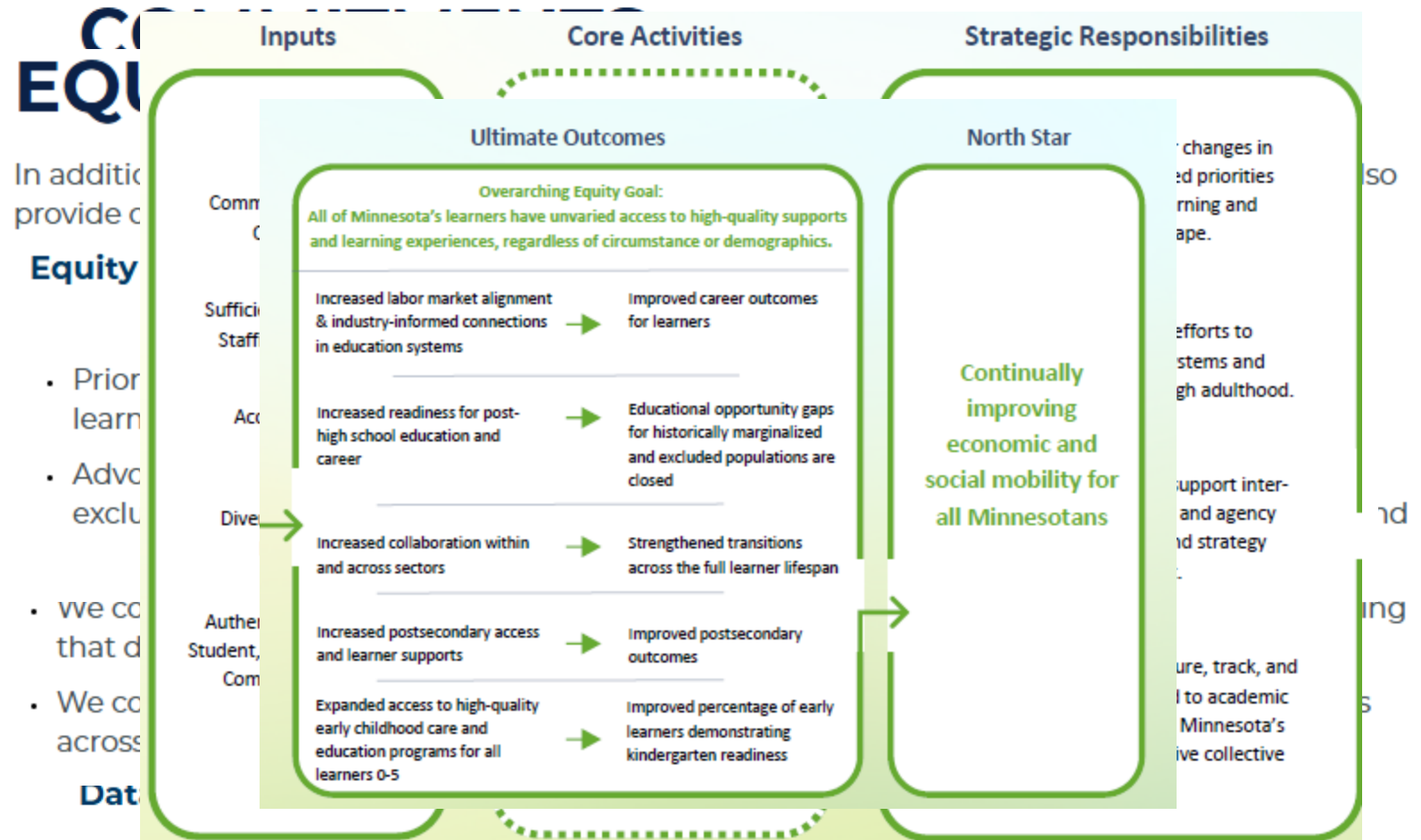
- The **Minnesota P-20 Education Partnership (MNP20)** is a multi-sector, independent coalition of leaders representing 27 organizations across early childhood, K-12, higher education, nonprofits, workforce development, and government
- Coalition also includes bipartisan, bicameral legislator representation
- Created in statute in 2009 with the charge of making education policy recommendations (from birth through higher ed and workforce development) to the governor and state legislature
- Much of our work also focuses on collaboration to influence change and to incubate, accelerate, and amplify promising practices statewide

Where does this work appear?



Philosophically & Strategically

- Mission & vision
- Commitments
- Equity principles
- Theory of change



Planning & Assessment

- Strategic planning
- Equity planning and assessment tool

Category 1: Impact

Criteria	Strong (2 points)	Moderate (1 point)	None (0 points)
1.1 The project has the	Project has numerous	Project has one or two	Project has no discernable
21-26 points	Transformational	This project has equity at its core and has the potential to be transformational in its equity-related outcomes.	
16-20 points	Strong	This project is strongly rooted in equity, and has the potential to make a significant impact in its equity-related outcomes.	
10-15 points	Developing	This project demonstrates several key aspects of being equity-centered, and has room to continue developing an equity-based approach.	
5-9 points	Emerging	This project demonstrates a few key aspects of being equity-centered, but its equity focus is still emerging.	
0-4 points	Not present	Sufficient evidence of being equity-centered is not present in this project.	
parties are incorporated throughout the project.	highlighted and addressed with specific strategies.	highlighted, the project has potential to meet diverse parties' needs.	project might have on diverse parties' needs.

Data & Data-Driven Action

- Minnesota's commitment to **disaggregated data**
- **Integrated Data Use and Capacity (IDUC) Committee**
- Coming soon: Dashboard of core metrics, **prioritizing our gaps**

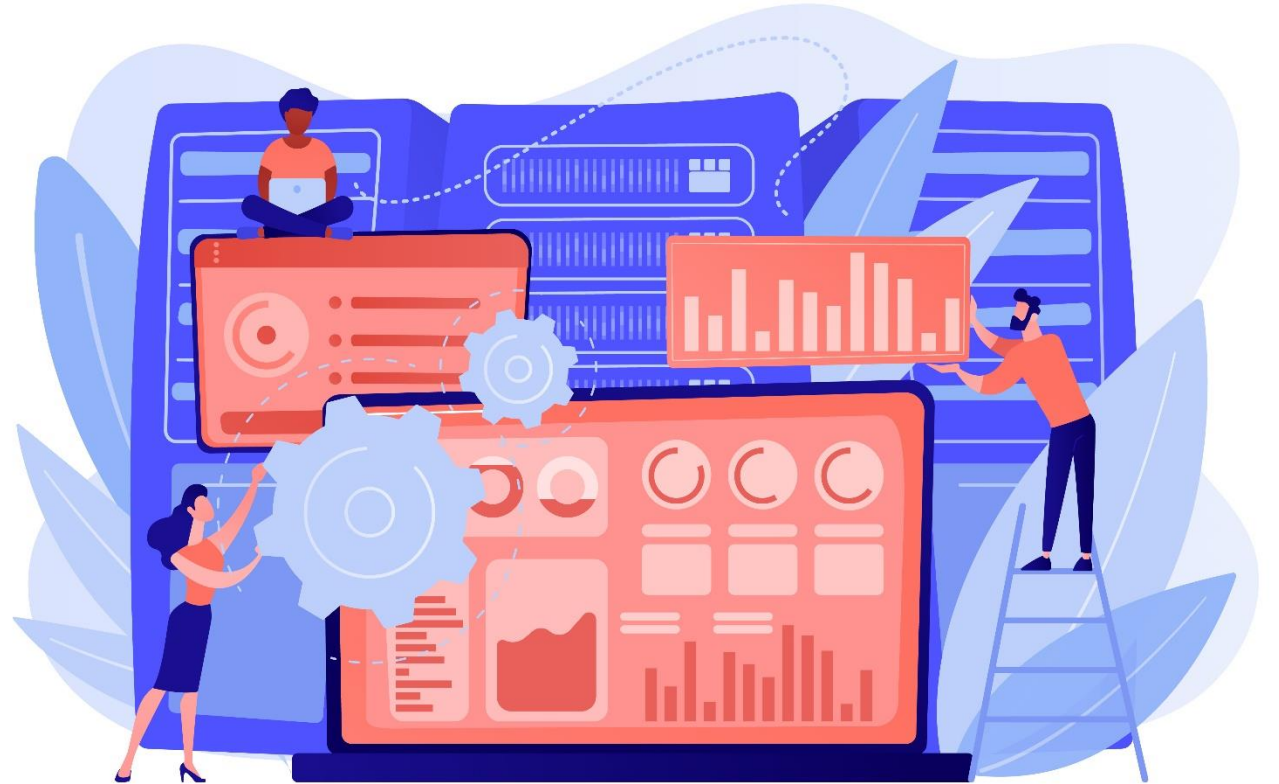


Image by vectorjuice on freepik.com

Focused Initiatives and Projects

We work to embed equity—and particularly racial equity—throughout our work with **intention**. Some examples include:

- **“Next Phase of Dual Enrollment Policy”** (College in High School Alliance national cohort of 7 states)
- **“Advancing Postsecondary Success for Justice-Impacted Students”** (SHEEO learning community of 5 states)
- **Educator Workforce Joint Committee** (with the Governor’s Workforce Development Board)
- Coming soon:
 - **FAFSA supports landscape review**
 - **Minnesota’s educational attainment goal** (with MnEEP)

For questions about MNP20's work:

Josiah Litant, Executive Director, Minnesota P-20 Education Partnership
josiah.litant@state.mn.us | 651.468.1483